



Townsville Water and Waste

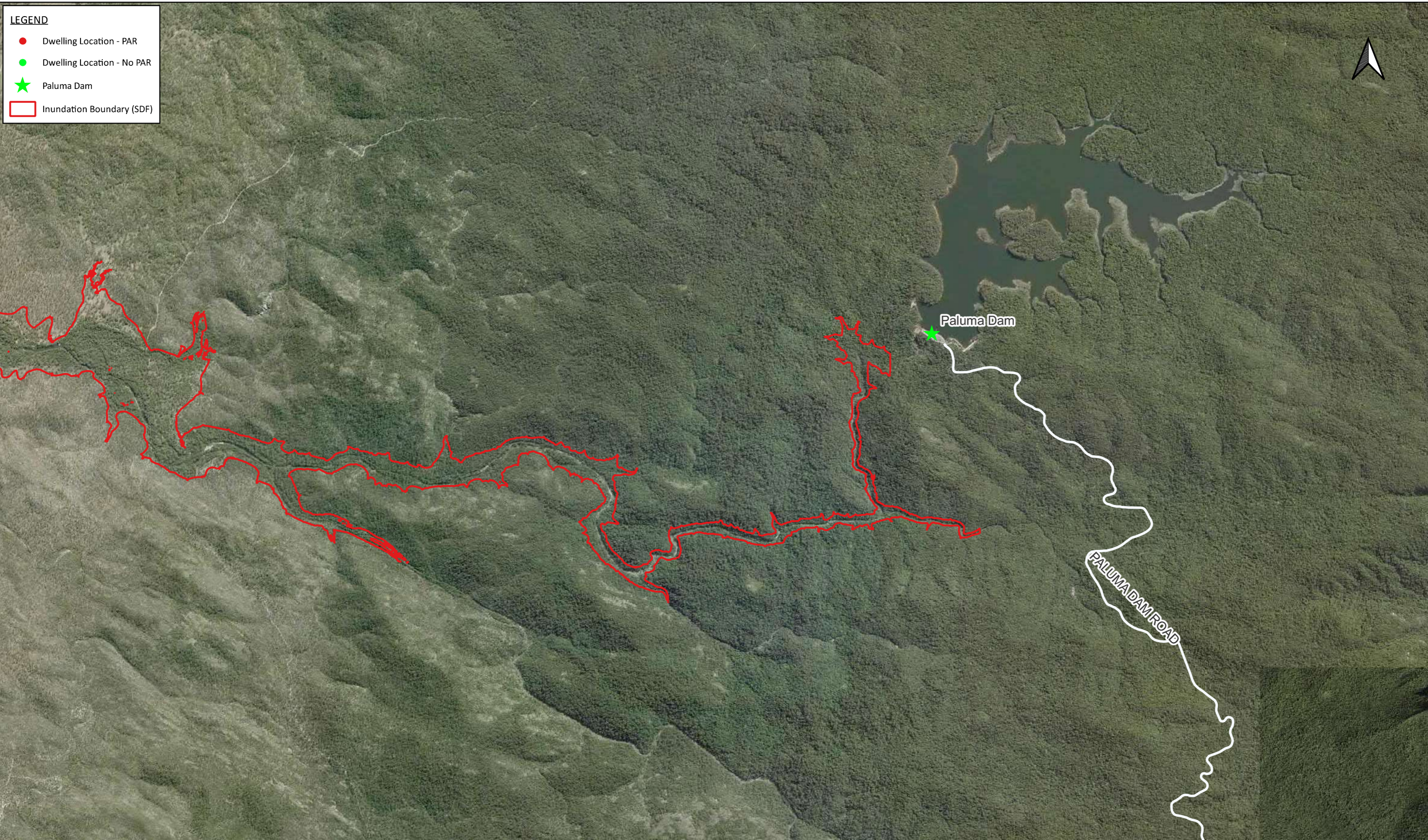
PD0023 Paluma Dam Emergency Action Plan

Authorised by: Principal Dam Safety & Operations N02632

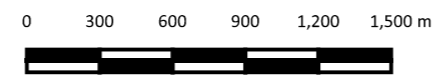
Effective Date: 26/09/2024

Appendices

Appendix A - Inundation Maps for Probable Maximum Flood Including Dam Break and Sunny Day Failure




PROJECT TITLE: Paluma Dam FIA
PROJECT NO: 30035710
MAP TITLE: SDF Inundation Map
MAP NO: 1
COORDINATE SYSTEM: GDA 94 / MGA ZONE 55



REVISION: 01
STATUS: FINAL
PAGE SIZE: A3
AUTHOR: L.Meteyard
SOURCES: QGlobe
DATE: 19/04/23

© SMEC Australia Pty Ltd 2022. All Rights Reserved
 Disclaimer: While all reasonable care has been taken to ensure the information contained on this map is up to date and accurate, this map contains data from a number of sources - no warranty is given that the information contained on this is free from error or omission. Any reliance placed on such information shall be at the sole risk of the user. Please verify the accuracy of all information prior to using it. This map is not a design document.

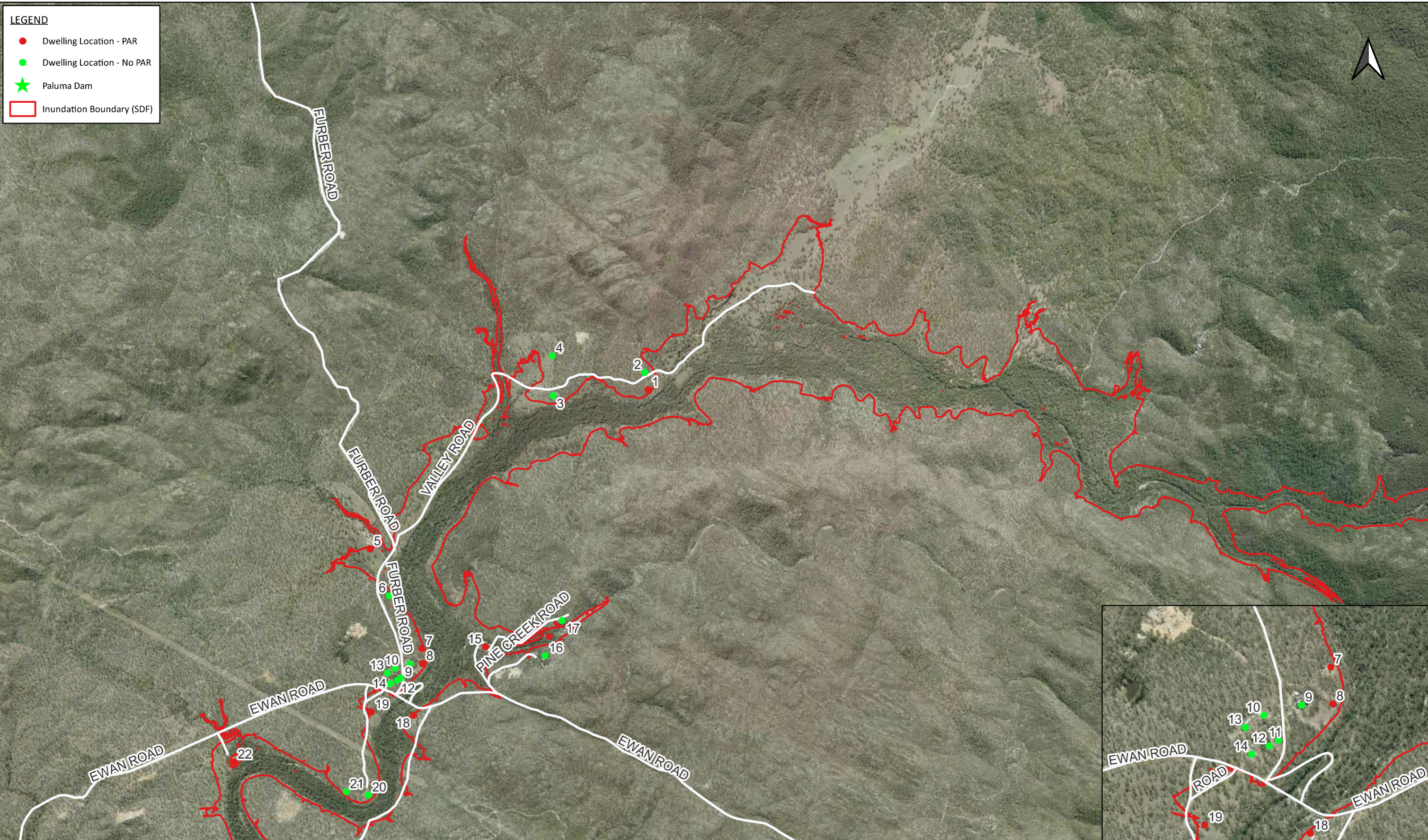
CLIENT:



CONSULTANT:



Member of the Surbana Jurong Group




PROJECT TITLE: Paluma Dam FIA
PROJECT NO: 30035710
MAP TITLE: SDF Inundation Map
MAP NO: 2
COORDINATE SYSTEM: GDA 94 / MGA ZONE 55

0 300 600 900 1,200 1,500 m

REVISION: 01
STATUS: FINAL
PAGE SIZE: A3
AUTHOR: L.Meteyard
SOURCES: QGlobe
DATE: 19/04/23

© SMEC Australia Pty Ltd 2022. All Rights Reserved
 Disclaimer: While all reasonable care has been taken to ensure the information contained on this map is up to date and accurate, this map contains data from a number of sources - no warranty is given that the information contained on this is free from error or omission. Any reliance placed on such information shall be at the sole risk of the user. Please verify the accuracy of all information prior to using it. This map is not a design document.

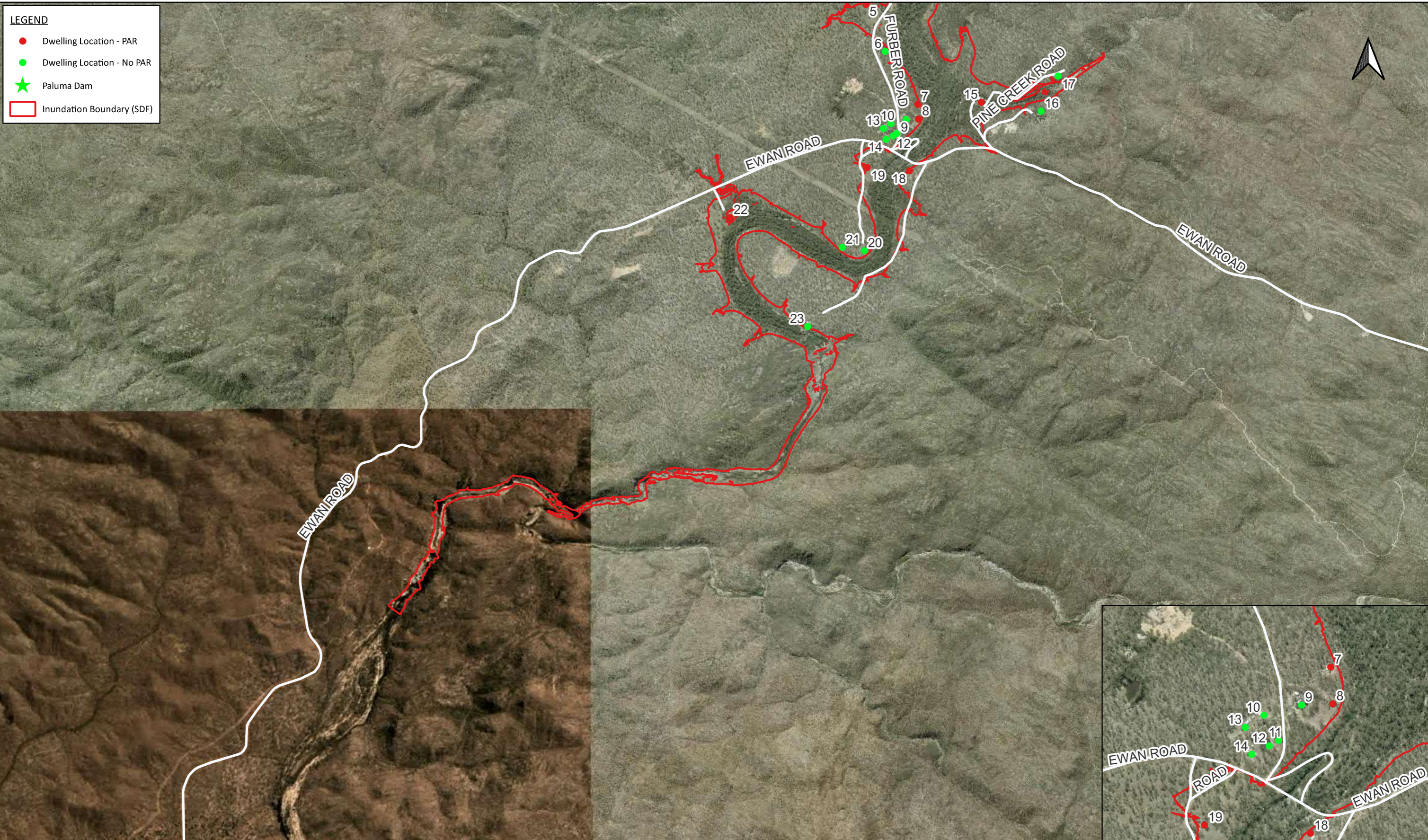
CLIENT:



CONSULTANT:



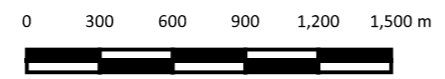
Member of the Surbana Jurong Group



LEGEND

- Dwelling Location - PAR
- Dwelling Location - No PAR
- ★ Paluma Dam
- Inundation Boundary (SDF)


PROJECT TITLE: Paluma Dam FIA
PROJECT NO: 30035710
MAP TITLE: SDF Inundation Map
MAP NO: 3
COORDINATE SYSTEM: GDA 94 / MGA ZONE 55



REVISION: 01
STATUS: FINAL
PAGE SIZE: A3
AUTHOR: L.Meteyard
SOURCES: QGlobe
DATE: 19/04/23

© SMEC Australia Pty Ltd 2022. All Rights Reserved
 Disclaimer: While all reasonable care has been taken to ensure the information contained on this map is up to date and accurate, this map contains data from a number of sources - no warranty is given that the information contained on this is free from error or omission. Any reliance placed on such information shall be at the sole risk of the user. Please verify the accuracy of all information prior to using it. This map is not a design document.

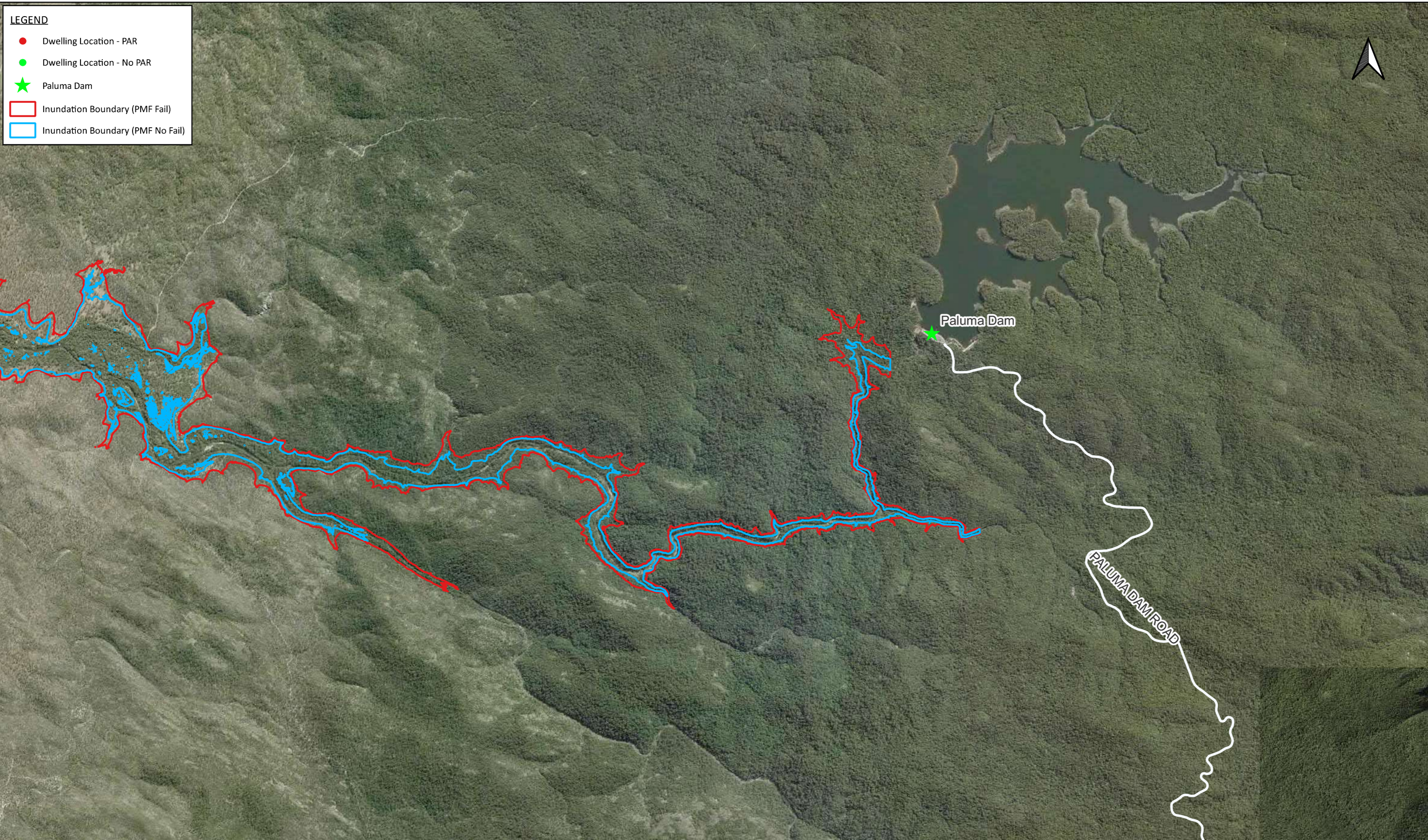
CLIENT:



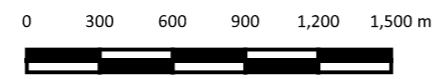
CONSULTANT:



Member of the Surbana Jurong Group




PROJECT TITLE: Paluma Dam FIA
PROJECT NO: 30035710
MAP TITLE: PMF Inundation Map
MAP NO: 1
COORDINATE SYSTEM: GDA 94 / MGA ZONE 55



REVISION: 01
STATUS: FINAL
PAGE SIZE: A3
AUTHOR: L.Meteyard
SOURCES: QGlobe
DATE: 19/04/23

© SMEC Australia Pty Ltd 2022. All Rights Reserved
 Disclaimer: While all reasonable care has been taken to ensure the information contained on this map is up to date and accurate, this map contains data from a number of sources - no warranty is given that the information contained on this is free from error or omission. Any reliance placed on such information shall be at the sole risk of the user. Please verify the accuracy of all information prior to using it. This map is not a design document.

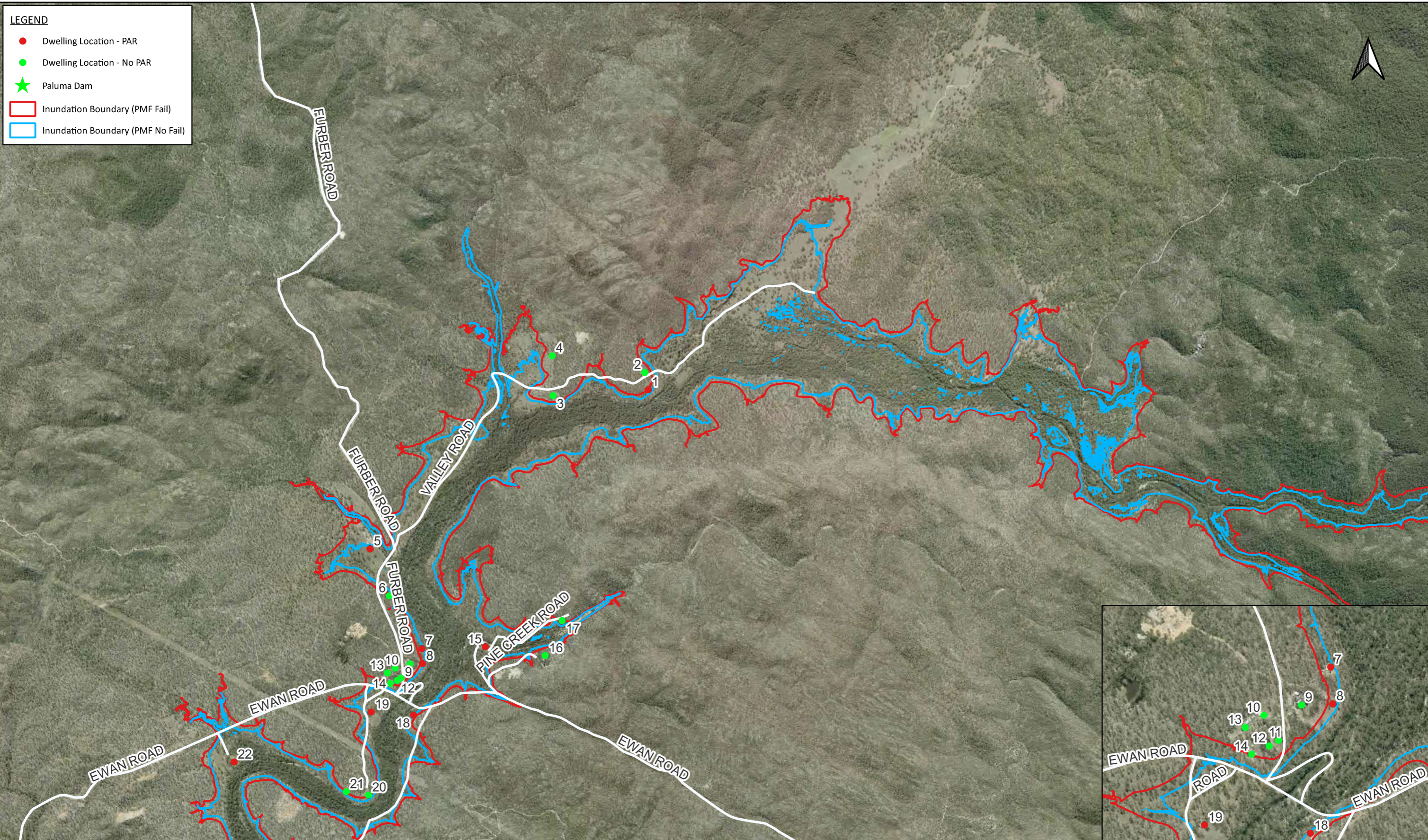
CLIENT:



CONSULTANT:



Member of the Surbana Jurong Group



LEGEND

- Dwelling Location - PAR
- Dwelling Location - No PAR
- ★ Paluma Dam
- Inundation Boundary (PMF Fail)
- Inundation Boundary (PMF No Fail)

PROJECT TITLE: Paluma Dam FIA
PROJECT NO: 30035710
MAP TITLE: PMF Inundation Map
MAP NO: 2
COORDINATE SYSTEM: GDA 94 / MGA ZONE 55

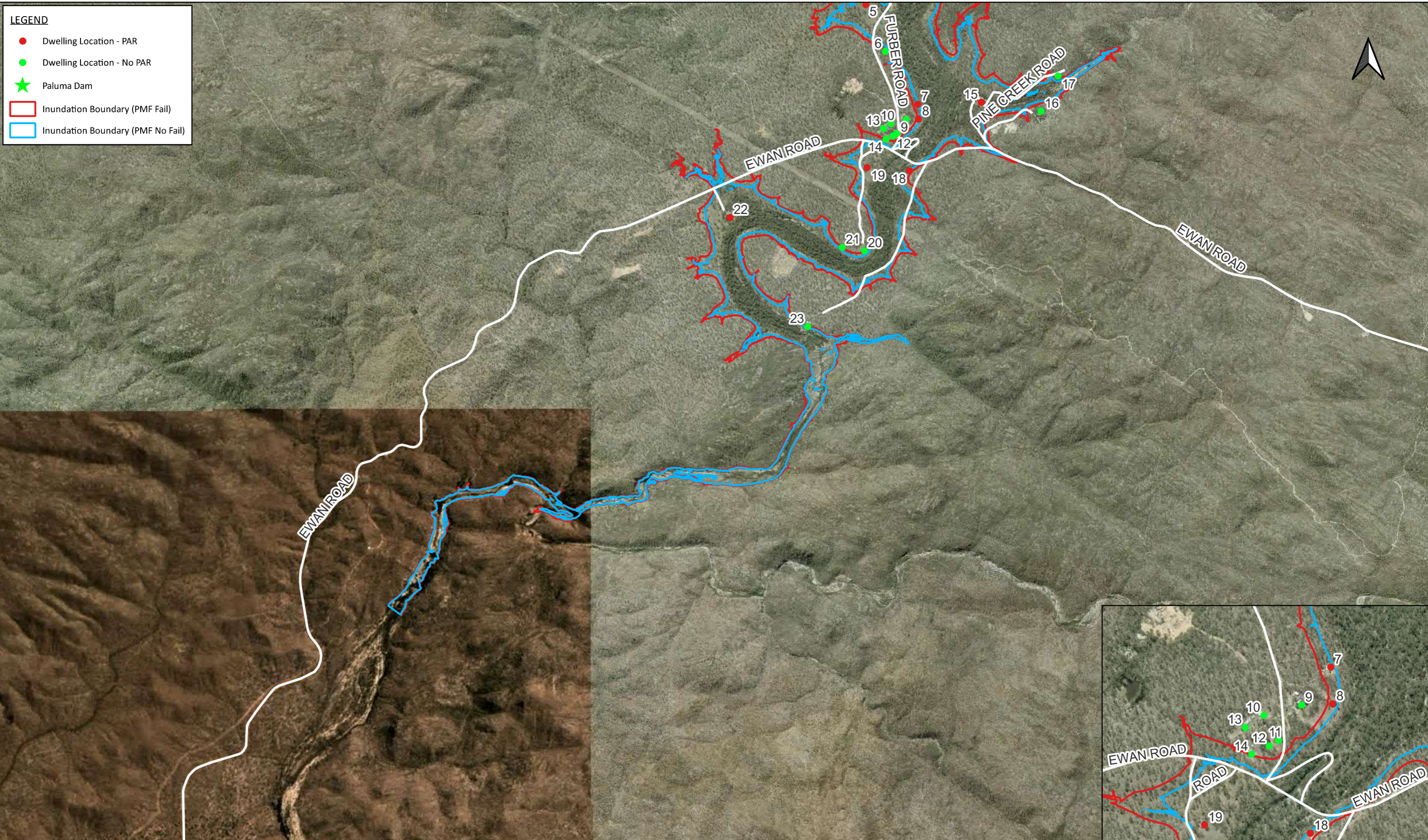
0 300 600 900 1,200 1,500 m

REVISION: 01
STATUS: FINAL
PAGE SIZE: A3
AUTHOR: L.Meteyard
SOURCES: QGlobe
DATE: 19/04/23

© SMEC Australia Pty Ltd 2022. All Rights Reserved
 Disclaimer: While all reasonable care has been taken to ensure the information contained on this map is up to date and accurate, this map contains data from a number of sources - no warranty is given that the information contained on this is free from error or omission. Any reliance placed on such information shall be at the sole risk of the user. Please verify the accuracy of all information prior to using it. This map is not a design document.

CLIENT:

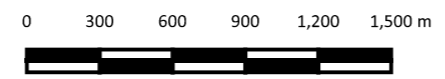
CONSULTANT:



LEGEND

- Dwelling Location - PAR
- Dwelling Location - No PAR
- ★ Paluma Dam
- Inundation Boundary (PMF Fail)
- Inundation Boundary (PMF No Fail)


PROJECT TITLE: Paluma Dam FIA
PROJECT NO: 30035710
MAP TITLE: PMF Inundation Map
MAP NO: 3
COORDINATE SYSTEM: GDA 94 / MGA ZONE 55



REVISION: 01
STATUS: FINAL
PAGE SIZE: A3
AUTHOR: L.Meteyard
SOURCES: QGlobe
DATE: 19/04/23

© SMEC Australia Pty Ltd 2022. All Rights Reserved
 Disclaimer: While all reasonable care has been taken to ensure the information contained on this map is up to date and accurate, this map contains data from a number of sources - no warranty is given that the information contained on this is free from error or omission. Any reliance placed on such information shall be at the sole risk of the user. Please verify the accuracy of all information prior to using it. This map is not a design document.

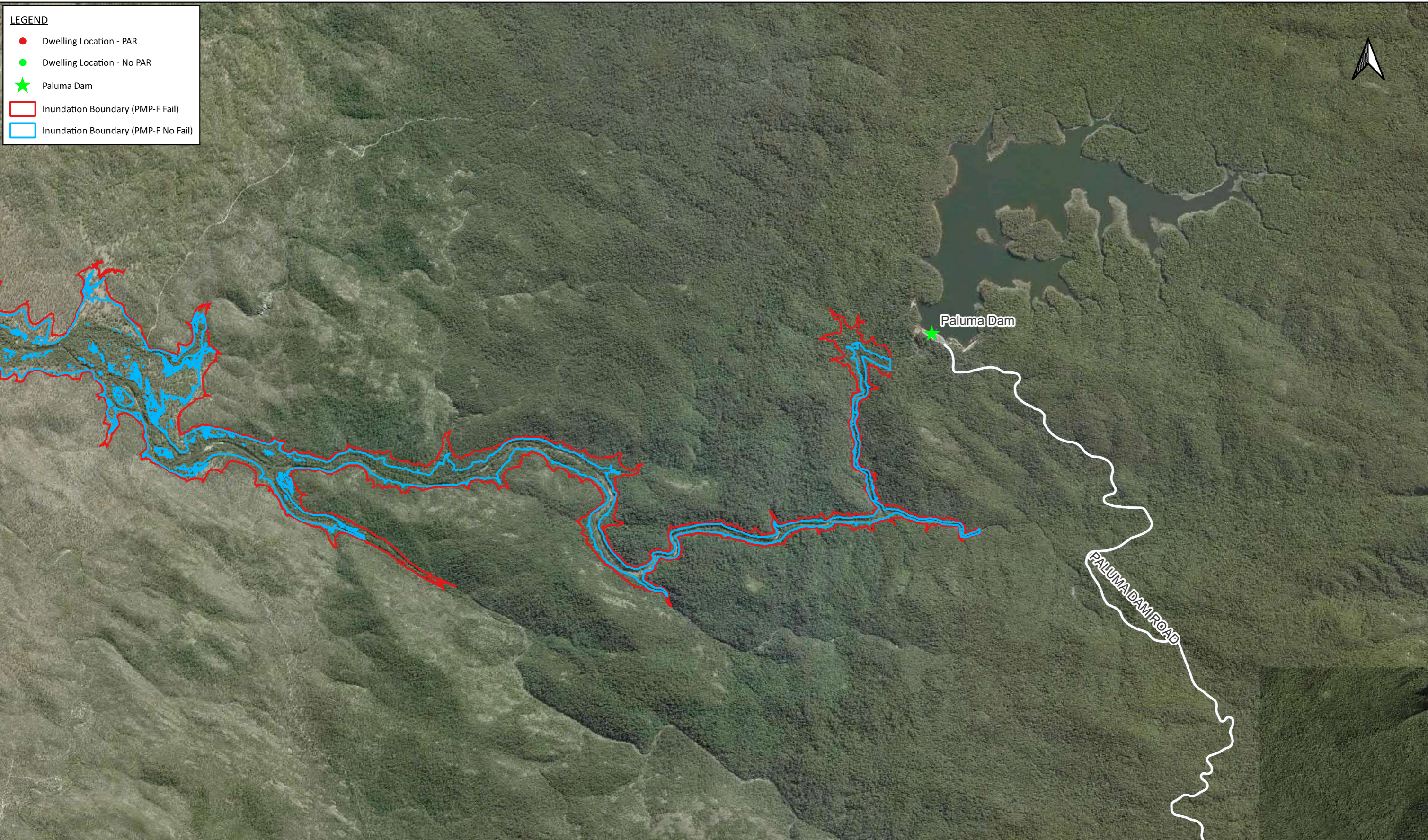
CLIENT:



CONSULTANT:



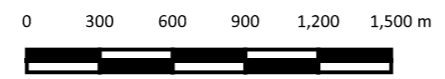
Member of the Surbana Jurong Group



LEGEND

- Dwelling Location - PAR
- Dwelling Location - No PAR
- ★ Paluma Dam
- Inundation Boundary (PMP-F Fail)
- Inundation Boundary (PMP-F No Fail)

PROJECT TITLE: Paluma Dam FIA
PROJECT NO: 30035710
MAP TITLE: PMP-F Inundation Map
MAP NO: 1
COORDINATE SYSTEM: GDA 94 / MGA ZONE 55




REVISION: 01
STATUS: FINAL
PAGE SIZE: A3
AUTHOR: L.Meteyard
SOURCES: QGlobe
DATE: 19/04/23

© SMEC Australia Pty Ltd 2022. All Rights Reserved

Disclaimer: While all reasonable care has been taken to ensure the information contained on this map is up to date and accurate, this map contains data from a number of sources - no warranty is given that the information contained on this is free from error or omission. Any reliance placed on such information shall be at the sole risk of the user. Please verify the accuracy of all information prior to using it. This map is not a design document.

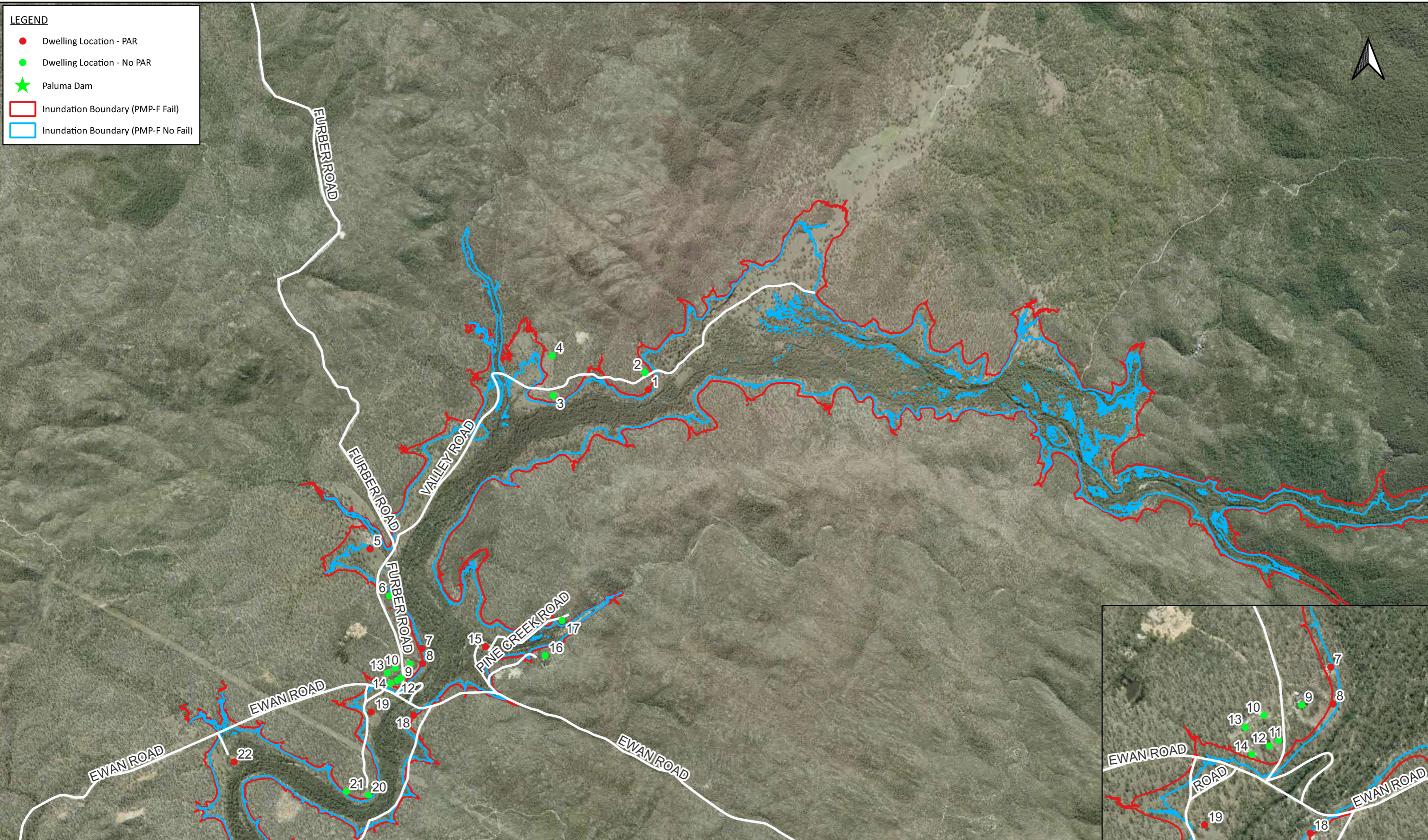
CLIENT:



CONSULTANT:



Member of the Surbana Jurong Group



LEGEND

- Dwelling Location - PAR
- Dwelling Location - No PAR
- ★ Paluma Dam
- Inundation Boundary (PMP-F Fail)
- Inundation Boundary (PMP-F No Fail)

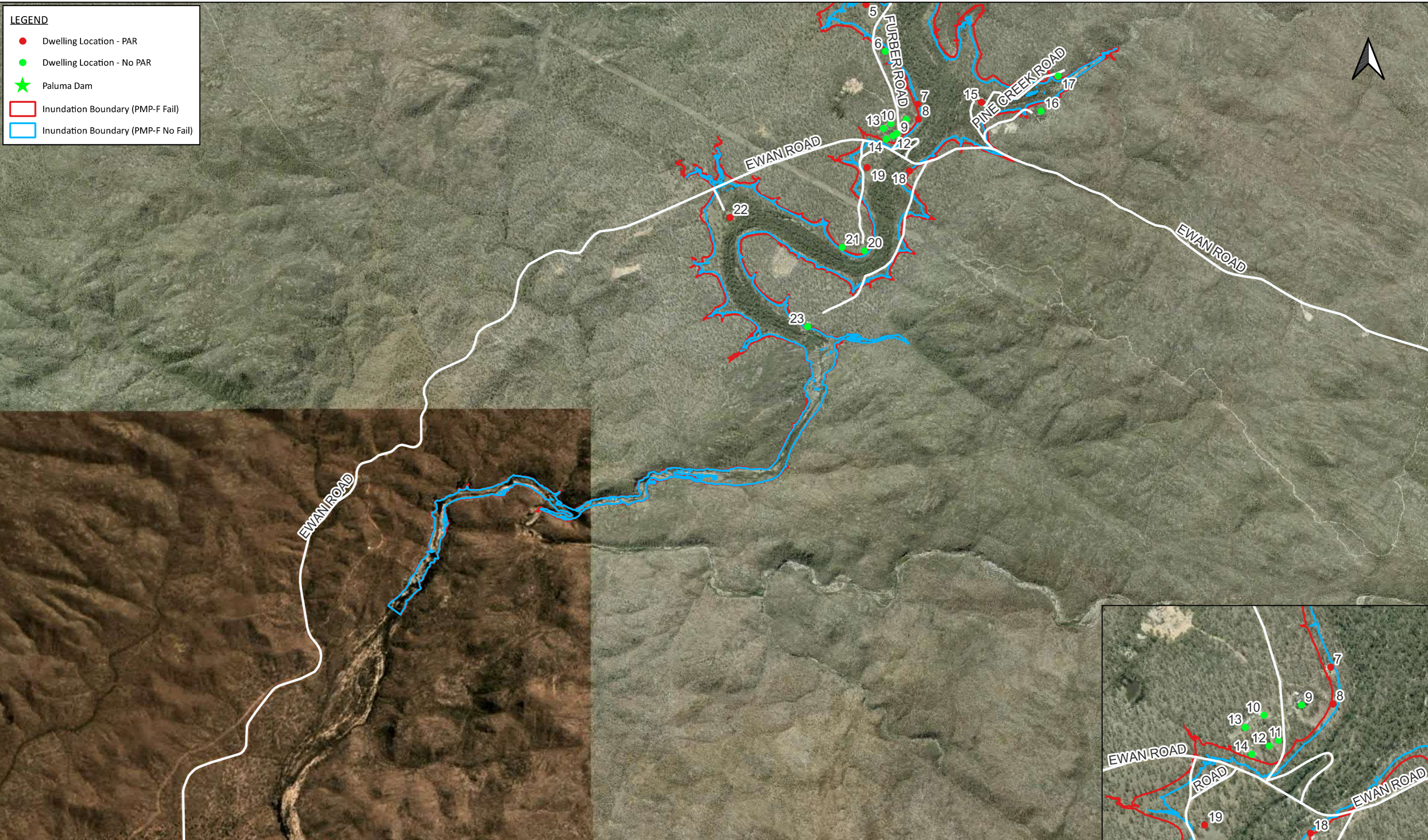
PROJECT TITLE:	Paluma Dam FIA
PROJECT NO:	30035710
MAP TITLE:	PMP-F Inundation Map
MAP NO:	2
COORDINATE SYSTEM:	GDA 94 / MGA ZONE 55

REVISION:	01	© SMEC Australia Pty Ltd 2022. All Rights Reserved Disclaimer: While all reasonable care has been taken to ensure the information contained on this map is up to date and accurate, this map contains data from a number of sources - no warranty is given that the information contained on this is free from error or omission. Any reliance placed on such information shall be at the sole risk of the user. Please verify the accuracy of all information prior to using it. This map is not a design document.
STATUS:	FINAL	
PAGE SIZE:	A3	
AUTHOR:	L.Meteyard	
SOURCES:	QGlobe	
DATE:	19/04/23	

CLIENT:

CONSULTANT:

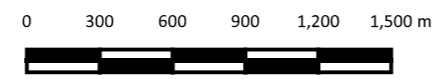
Member of the Surbana Jurong Group



LEGEND

- Dwelling Location - PAR
- Dwelling Location - No PAR
- ★ Paluma Dam
- Inundation Boundary (PMP-F Fail)
- Inundation Boundary (PMP-F No Fail)

PROJECT TITLE: Paluma Dam FIA
PROJECT NO: 30035710
MAP TITLE: PMP-F Inundation Map
MAP NO: 3
COORDINATE SYSTEM: GDA 94 / MGA ZONE 55



REVISION: 01
STATUS: FINAL
PAGE SIZE: A3
AUTHOR: L.Meteyard
SOURCES: QGlobe
DATE: 19/04/23

© SMEC Australia Pty Ltd 2022. All Rights Reserved
 Disclaimer: While all reasonable care has been taken to ensure the information contained on this map is up to date and accurate, this map contains data from a number of sources - no warranty is given that the information contained on this is free from error or omission. Any reliance placed on such information shall be at the sole risk of the user. Please verify the accuracy of all information prior to using it. This map is not a design document.

CLIENT:



CONSULTANT:



Member of the Surbana Jurong Group