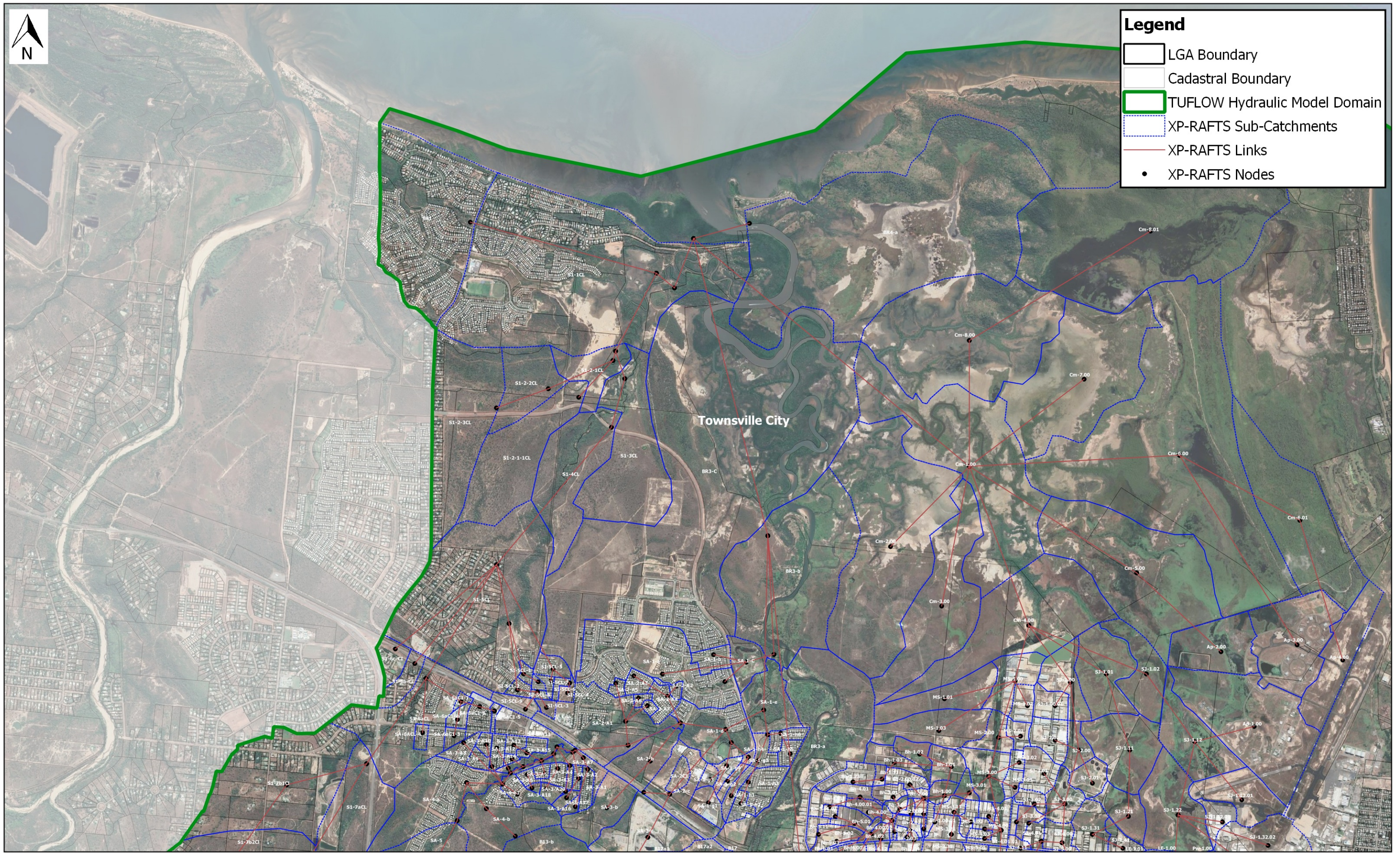




Legend

- LGA Boundary
- Cadastral Boundary
- TUFLOW Hydraulic Model Domain
- XP-RAFTS Sub-Catchments
- XP-RAFTS Links
- XP-RAFTS Nodes



Townsville City

Scale: 1:39,900

Bohle River XP-RAFTS Model Layout - Map Set 1
 Project: Bohle River Flood Study Update
 Client: Townsville City Council

Details	Rev	Description	Drawn	Checked	Date
Original Size A3	1	Draft	KMD / ITB	AMD	25/02/2021
Projection: GDA / MGA94 Zone 56					
Imagery Source: Google Earth 2019					
Local Authority: Townsville City Council					





Legend

- LGA Boundary
- Cadastral Boundary
- TUFLOW Hydraulic Model Domain
- XP-RAFTS Sub-Catchments
- XP-RAFTS Links
- XP-RAFTS Nodes



Bohle River XP-RAFTS Model Layout - Map Set 2

Project: Bohle River Flood Study Update
 Client: Townsville City Council

Scale: 1:48,900

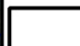





Details	Rev	Description	Drawn	Checked	Date
Original Size A3	1	Draft	KMD / ITB	AMD	25/02/2021
Projection: GDA / MGA94 Zone 56					
Imagery Source: Google Earth 2019					
Local Authority: Townsville City Council					

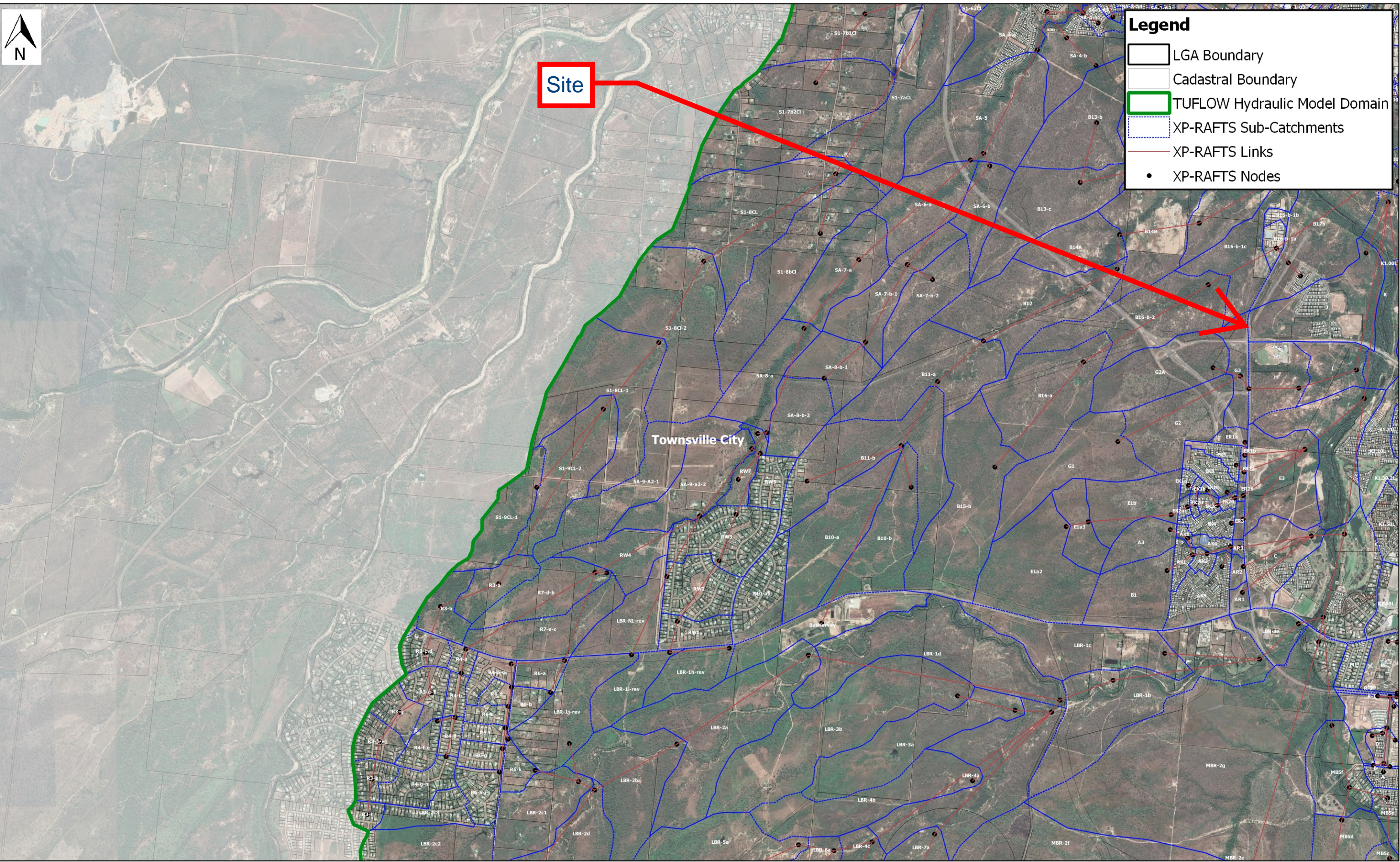




Site

Legend

-  LGA Boundary
-  Cadastral Boundary
-  TUFLOW Hydraulic Model Domain
-  XP-RAFTS Sub-Catchments
-  XP-RAFTS Links
-  XP-RAFTS Nodes

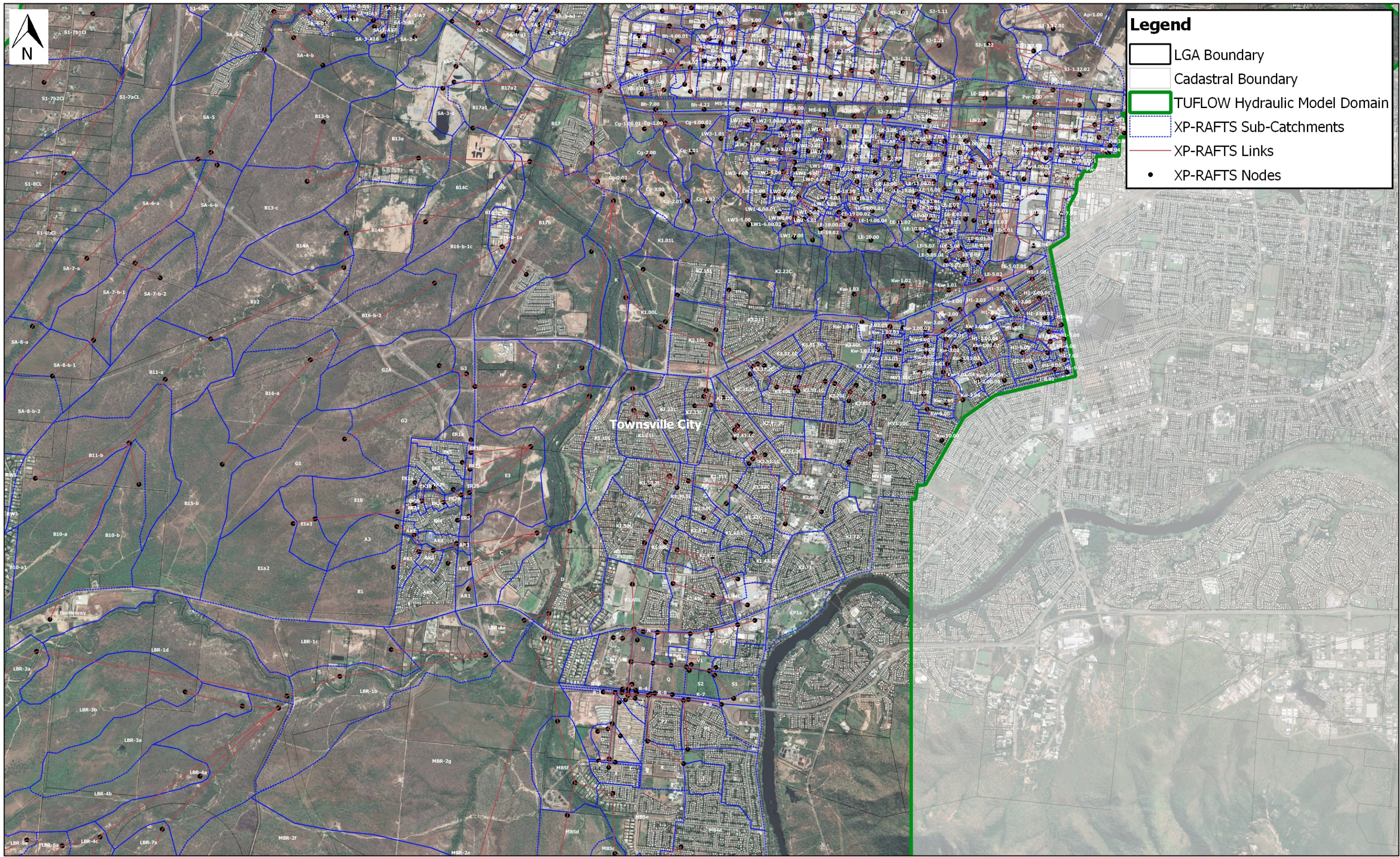


Bohle River XP-RAFTS Model Layout - Map Set 3

Project: Bohle River Flood Study Update
Client: Townsville City Council

Details	Rev	Description	Drawn	Checked	Date
Original Size A3	1	Draft	KMD / ITB	AMD	25/02/2021
Projection: GDA / MGA94 Zone 56					
Imagery Source: Google Earth 2019					
Local Authority: Townsville City Council					





Legend

- LGA Boundary
- Cadastral Boundary
- TUFLOW Hydraulic Model Domain
- XP-RAFTS Sub-Catchments
- XP-RAFTS Links
- XP-RAFTS Nodes

Scale: 1:39,900 0 250 500 750 1,000 m

Bohle River XP-RAFTS Model Layout - Map Set 4
 Project: Bohle River Flood Study Update
 Client: Townsville City Council

Details	Rev	Description	Drawn	Checked	Date
Original Size A3	1	Draft	KMD / ITB	AMD	25/02/2021
Projection: GDA / MGA94 Zone 56					
Imagery Source: Google Earth 2019					
Local Authority: Townsville City Council					





Legend

- LGA Boundary
- Cadastral Boundary
- TUFLOW Hydraulic Model Domain
- XP-RAFTS Sub-Catchments
- XP-RAFTS Links
- XP-RAFTS Nodes



Charters Towers Regional

Townsville City

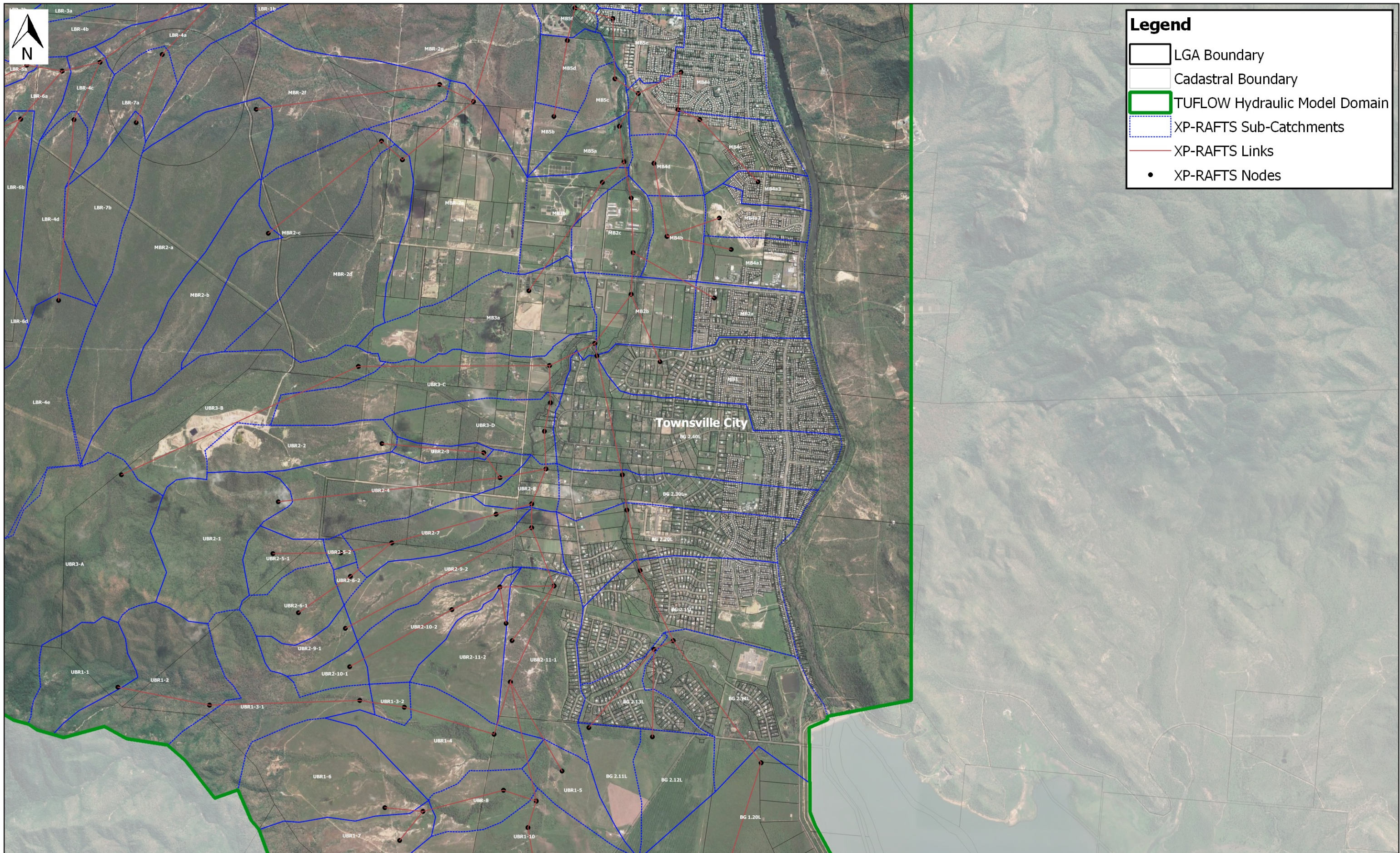
Bohle River XP-RAFTS Model Layout - Map Set 5

Project: Bohle River Flood Study Update
Client: Townsville City Council

Scale: 1:39,900

Details	Rev	Description	Drawn	Checked	Date
Original Size A3	1	Draft	KMD / ITB	AMD	25/02/2021
Projection: GDA / MGA94 Zone 56					
Imagery Source: Google Earth 2019					
Local Authority: Townsville City Council					





Legend

- LGA Boundary
- Cadastral Boundary
- TUFLOW Hydraulic Model Domain
- XP-RAFTS Sub-Catchments
- XP-RAFTS Links
- XP-RAFTS Nodes

Scale: 1:39,900

Bohle River XP-RAFTS Model Layout - Map Set 6

Project: Bohle River Flood Study Update
Client: Townsville City Council

Details	Rev	Description	Drawn	Checked	Date
Original Size A3	1	Draft	KMD / ITB	AMD	25/02/2021
Projection: GDA / MGA94 Zone 56					
Imagery Source: Google Earth 2019					
Local Authority: Townsville City Council					