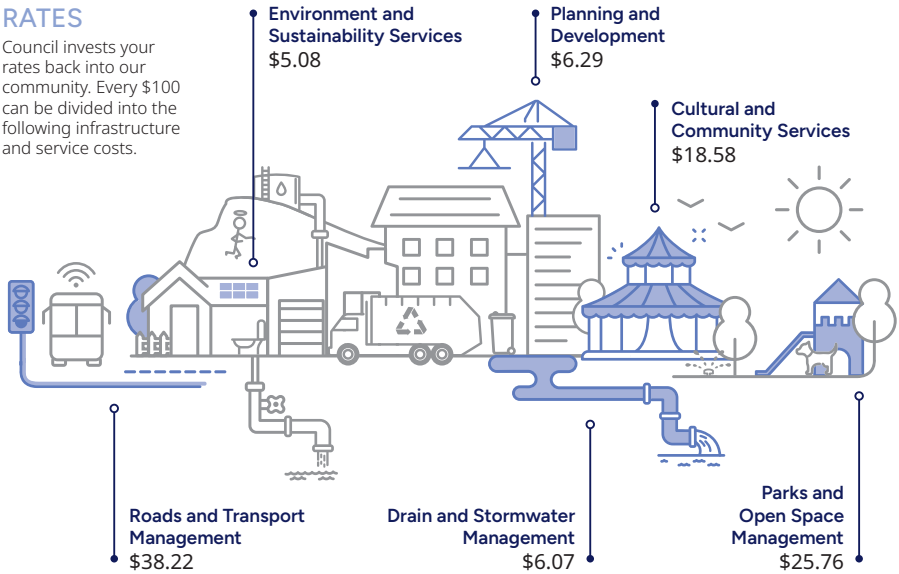


WHAT THE 2024/25 BUDGET MEANS FOR YOU

For every \$100 - where your rates go.

RATES

Council invests your rates back into our community. Every \$100 can be divided into the following infrastructure and service costs.



For every \$100 - where your utilities go.

UTILITIES

Council invests your utility charges back into our community. Every \$100 can be divided into the following infrastructure and service costs.

