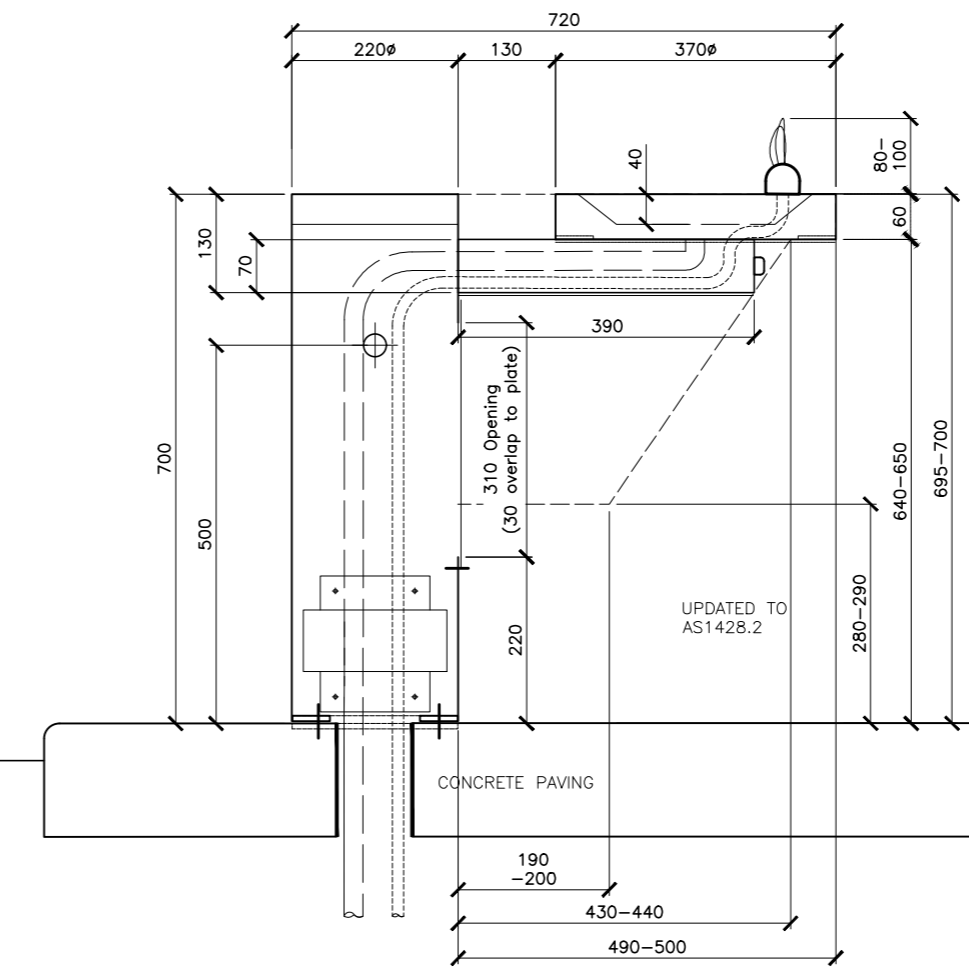
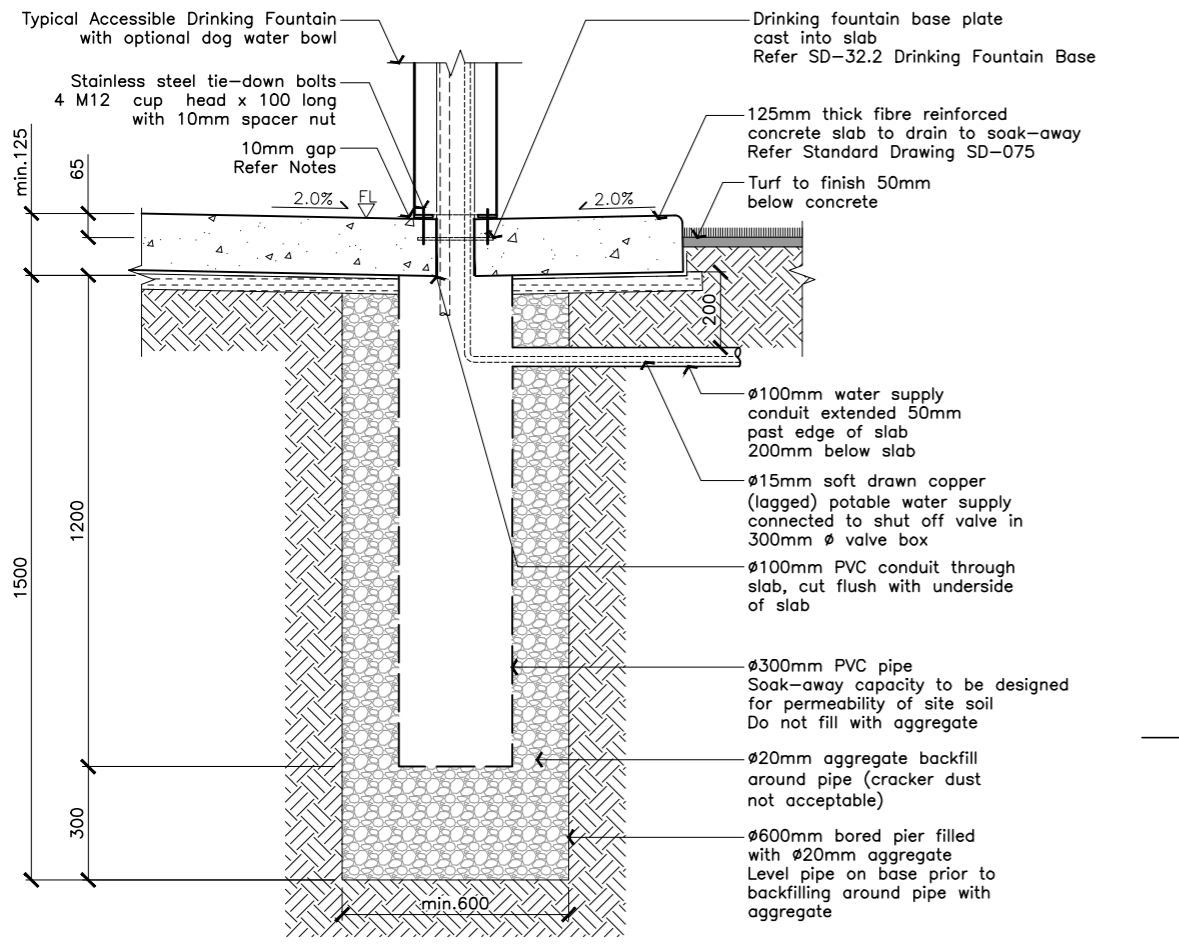


- NOTES GENERAL**
- All dimensions are in millimetres, unless otherwise noted.
 - Do not scale these drawings. Use figured dimensions.
 - The Contractor shall check, verify on site and be responsible for the correctness of all dimensions shown on the drawings and discrepancies shall be reported immediately to the Project Manager before any work proceeds.
 - These drawings shall be read in conjunction with all other drawings and specifications and with such other written instructions as may be issued during the course of construction. All discrepancies shall be reported immediately for decision before proceeding with the project.
 - Any potential interference with existing trees is to be identified by the Contractor and reported to the Project Manager and Council's Arborist prior to commencement of construction.
 - All workmanship and materials shall be in accordance with the requirements of the Landscape Policy and Construction Standards, Standards Australia Codes and the by-laws and ordinances of the relevant authorities.
 - During construction any structure and neighbouring structures shall be maintained in a stable condition, ensuring no parts are overstressed.
 - The contractor is to confirm the location and depth of services within the construction limits prior to commencement of construction. Services to be noted on As Constructed drawings.
 - The Contractor shall rectify any damage to existing hard and soft infrastructure and/or services, caused through carrying out the works, at the Contractor's expense.
 - It is the contractors responsibility to ensure that the project is carried out in accordance with the drawings and specifications.

CITY PLAN REFERENCES

Part 9.3.3	Landscape Code
SC6.4.12.1	Policy Intent
SC6.4.23	Construction Management
SC6.4.23.1	Construction (Protection of Trees and Vegetation)
SC6.4.10.3	Construction Standards
SC6.4.13(6)	Drinking Fountain and Water Tap
SC6.4.18	Concrete Works
SC6.4.6.17	Control of Traffic

- DRINKING FOUNTAIN GENERAL NOTES**
- Where Drinking Fountain/s are nominated, provide at least one accessible drinking fountain.
 - Drinking Fountain, access path and circulation space to comply with
 - AS1428.1 Design for Access and Mobility: Part 1 General Requirements for Access - New Building Work.
 - AS/NZ 4020 Testing Products for use in contact with drinking water;
 - WaterMark Certification (Australian Building Codes Board)
 - Circulation space not to block accessible path of travel, and to allow 360° turn, with accessible path of travel width dependant on site circulation criteria.
 - Drinking fountain to be supplied and installed in accordance with
 - SC6.4.13(6) Drinking fountain and water tap.
 - Drinking fountain Type:
 - Townsville City Council Accessible
 - Alternative type and make to be submitted for approval.



- FABRICATION & SUPPLY**
- Supply and installation of drink fountain, including potable water connection to main, to be by licensed plumber (in accordance with AS3500 and AS/NZ4020) and for approval by Townsville City Council.
 - Materials
 - Pedestal: 220Ø x 750mmH, 2.5mm 316 stainless steel
 - Arm: 130W x 70H x 46mmL, 2mm 316 stainless steel
 - Inspection Hatch: 270W x 340mmL, 2mm 316 stainless steel
 - Inspection Plate: 370W x 446mmL, 2mm 316 stainless steel
 - Bowl: 370mmØ x 130mmH, 2mm 316 stainless steel framing plate, 5mm 316 stainless steel
 - Fountain: Easy Flow (WaterMark)
 - Push Button: Enware Drink Bubbler Assembly (DET701 flat button) (WaterMark)
 - Drain Fittings: 45mmØ 316 stainless steel Humdinger 40mmØ chrome plated brass cap, 40mmØ lining male plain DWV PVC adaptor, 40mmØ MI DWV PVC, 30mmØ stainless washer with 8mmØ centre hole
 - Tap: single male chrome plated garden tap inc. vacuum breaker
 - Water Pipe: 15mmØ soft drawn copper (WaterMark)
 - Water Supply: 25mm take off, isolation valve & 32mm PN12.5 poly pipe
 - Shut Off Valve: in 300mmØ valve box
- Bowl and drink fountain pedestal to be minimum food grade 304 stainless steel; grade 316 stainless steel in marine environment. Full weld to all joints.
 - Cap, inspection plate and inspection hatch to be fixed with anti-vandal torque head self-tapping stainless steel screws. All screw hole penetrations to be drilled & tapped.
- INSTALL**
- Hold point inspection prior to slab pour:
 - WaterMark Certified Schedule of Products;
 - soak-away installation with water supply conduit;
 - fountain base installation with water pipework feed.
 - Soak-away capacity to be designed for permeability of site soil and installed as detailed.
 - Concrete slab installed with falls to central soak-away as detailed. No overflow water to drain across adjacent hard surfaces.
 - Drinking fountain base to be installed level with at least 50mm of thread above the finished slab level. Place 10mm spacer nut on each base plate thread to raise exterior pedestal above concrete slab. Tape threads.

No.	DATE	DESCRIPTION	AP'D
D	17/07/2023	CITY PLAN REFERENCE UPDATE	PM
C	04/09/2022	SIZE MODIFICATIONS	KB
B	25/01/2022	CHANGE TO DRINK FOUNTAIN TYPE	KB
A	23/10/2020	ORIGINAL ISSUE	CW
REVISIONS			

NOTES :

REFERENCE DRAWINGS
SD-075 - Concrete pathway reinforced concrete (fibre) alternative
SD-32.2 - Drinking Fountain Base

Full Size A1	DRAWN: DESIGN OFFICE	CHECKED: HB
Not to scale	Senior Open Space Planner Approved: <i>Hass El Sizar</i>	Date: Jun 17, 2024
	Team Manager EAIP Approved: <i>Zdenka Krsook</i>	Date: Jun 17, 2024



FURNITURE DRINKING FOUNTAIN

STANDARD DRAWING

OPEN SPACE

SD-664 | D