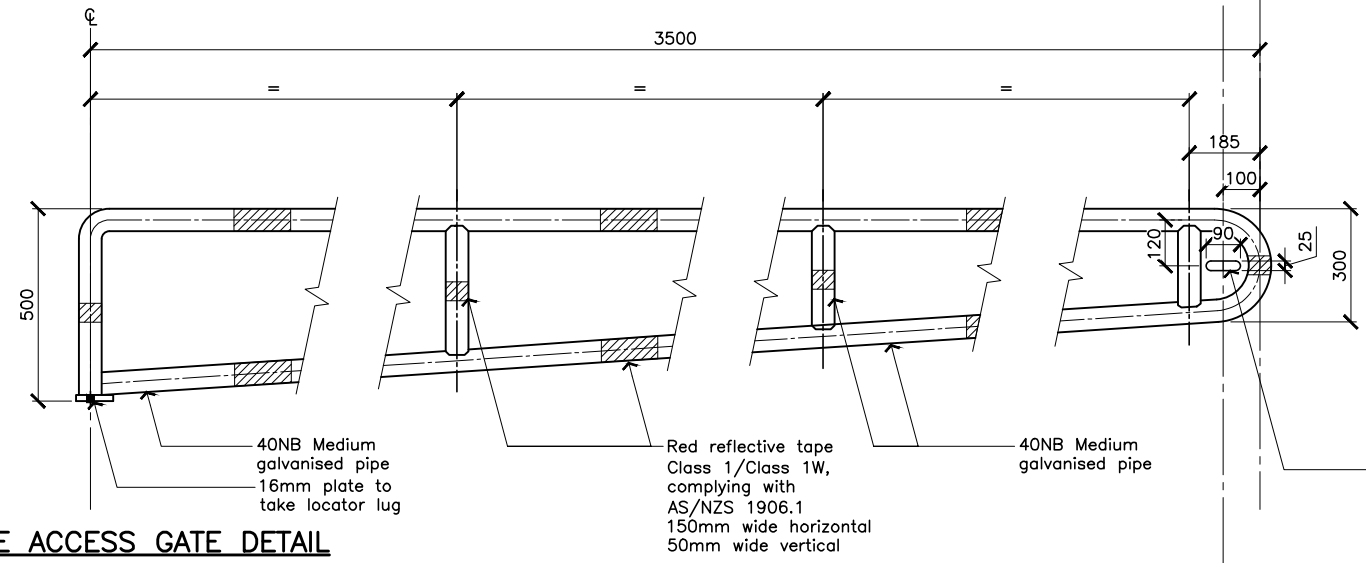
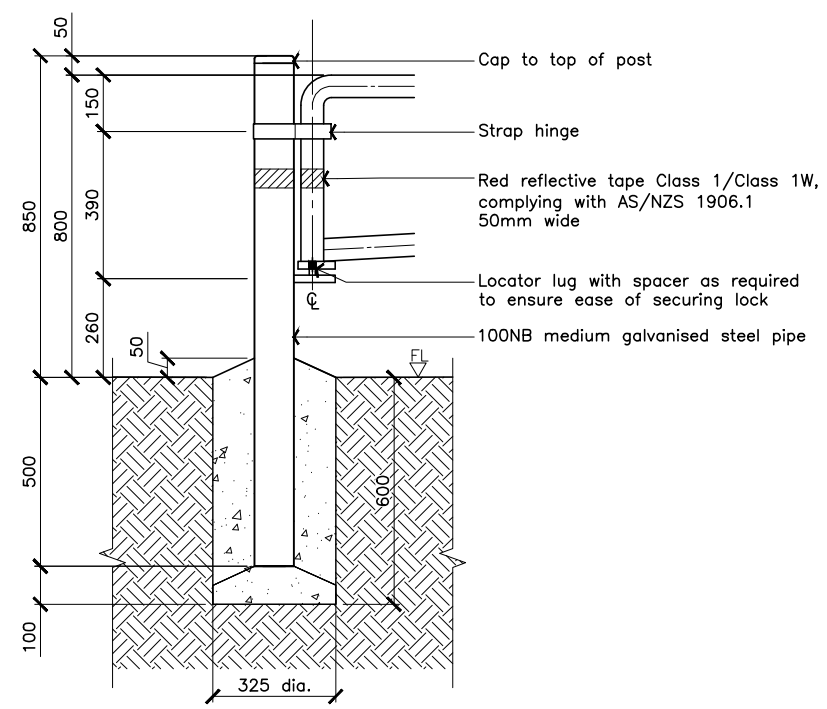


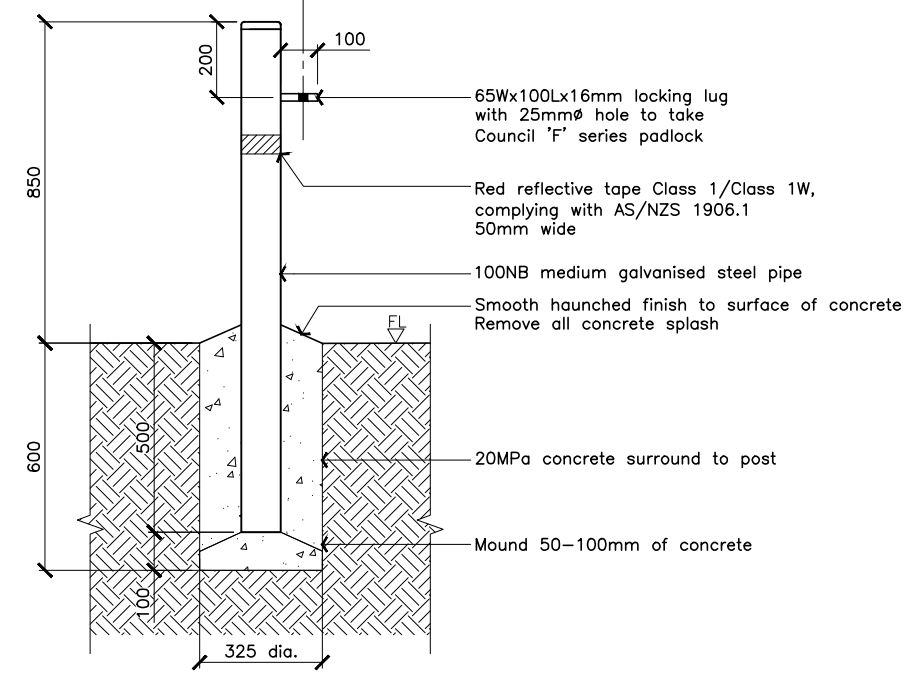
MAINTENANCE ACCESS GATE PLAN VIEW



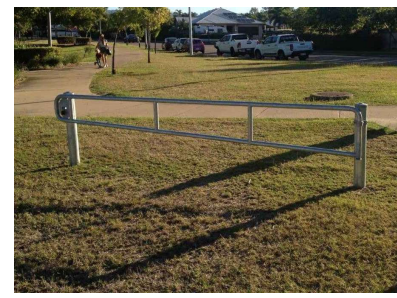
MAINTENANCE ACCESS GATE DETAIL



HINGE POST DETAIL



LOCKING POST DETAIL



MAINTENANCE ACCESS GATE



LOCKING MECHANISM

NOTES

GENERAL

1. All dimensions are in millimetres, unless otherwise noted.
2. Do not scale these drawings. Use figured dimensions.
3. The Contractor shall check, verify on site and be responsible for the correctness of all dimensions shown on the drawings and discrepancies shall be reported immediately to the Project Manager before any work proceeds.
4. These drawings shall be read in conjunction with all other drawings and specifications and with such other written instructions as may be issued during the course of construction. All discrepancies shall be reported immediately for decision before proceeding with the project.
5. Any potential interference with existing trees is to be identified by the Contractor and reported to the Project Manager and Council's Arborist prior to commencement of construction.
6. All workmanship and materials shall be in accordance with the requirements of the Landscape Policy and Construction Standards, Standards Australia Codes and the by-laws and ordinances of the relevant authorities.
7. During construction any structure and neighbouring structures shall be maintained in a stable condition, ensuring no parts are overstressed.
8. The contractor is to confirm the location and depth of services within the construction limits prior to commencement of construction. Services to be noted on As Constructed drawings.
9. The Contractor shall rectify any damage to existing hard and soft infrastructure and/or services, caused through carrying out the works, at the Contractor's expense.
10. It is the contractors responsibility to ensure that the project is carried out in accordance with the drawings and specifications.

CITY PLAN REFERENCES

Part 9.3.3	Landscape Code
SC6.4.12.1	Policy Intent
SC6.4.23	Construction Management
SC6.4.23.1	Construction (Protection of Trees and Vegetation)
SC6.4.10.3	Construction Standards
SC6.4.6.16	Boundary Fencing
SC6.4.18	Concrete Works
SC6.4.6.17	Control of Traffic

MAINTENANCE ACCESS GATE

1. Supply and install maintenance access gate to the location as detailed on the approved landscape drawings or as directed by the Project Manager and Townsville City Council Maintenance Services representative.
2. Post footings within dripline of tree canopy shall be excavated by hydrovac/by hand. Refer City Plan SC6.4.23.1 Construction (Protection of Trees and Vegetation)
3. Gate to be located at 1.5m offset from bollards, trees and other vertical elements.
4. Townsville City Council Arborist to determine the need for trimming of overhanging trees clear of fence line.
5. All posts and gates shall be hot dip galvanised iron pipe in accordance with:
 - AS/NZS 1163 Cold-formed structural steel hollow sections
 - Grade: C350L0
5. Gate to be fabricated as detailed and in accordance with SC6.4.6.16 Boundary Fencing
6. Footing as detailed and in accordance with SC6.4.18 Concrete Works.
7. Provide Townsville City Council standard locks:
 - Type 'F'

No.	DATE	DESCRIPTION	AP'D
B	26/07/2023	CITY PLAN REFERENCE UPDATE	PM
A		ORIGINAL ISSUE	
REVISIONS			

NOTES :
 REFERENCE DRAWINGS
 SD-654 Fencing Open Space Bollard
 SD-656 Fencing Rural

Full Size A1
 Not to scale

DRAWN: DESIGN OFFICE
 CHECKED: HB
 Senior Open Space Planner Approved: *Hass El Bitar*
 Date: Jun 17, 2024
 Team Manager EAIP Approved: *Zdenka Kravcik*
 Date: Jun 17, 2024



FENCING
MAINTENANCE ACCESS GATE

STANDARD DRAWING
OPEN SPACE
 SD-657 B