



City of
Townsville

Authorised by: Principal Dam Safety & Operations N02632

Townsville Water and Waste

PD0023 Paluma Dam Emergency Action Plan

Appendix B - Depth Maps for Probable Maximum Flood Including Dam Break and Sunny Day Failure



LEGEND

- Dwelling Location - PAR
- Dwelling Location - No PAR
- <= 2
- 2 - 4
- 4 - 6
- 6 - 8
- 8 - 9
- > 9

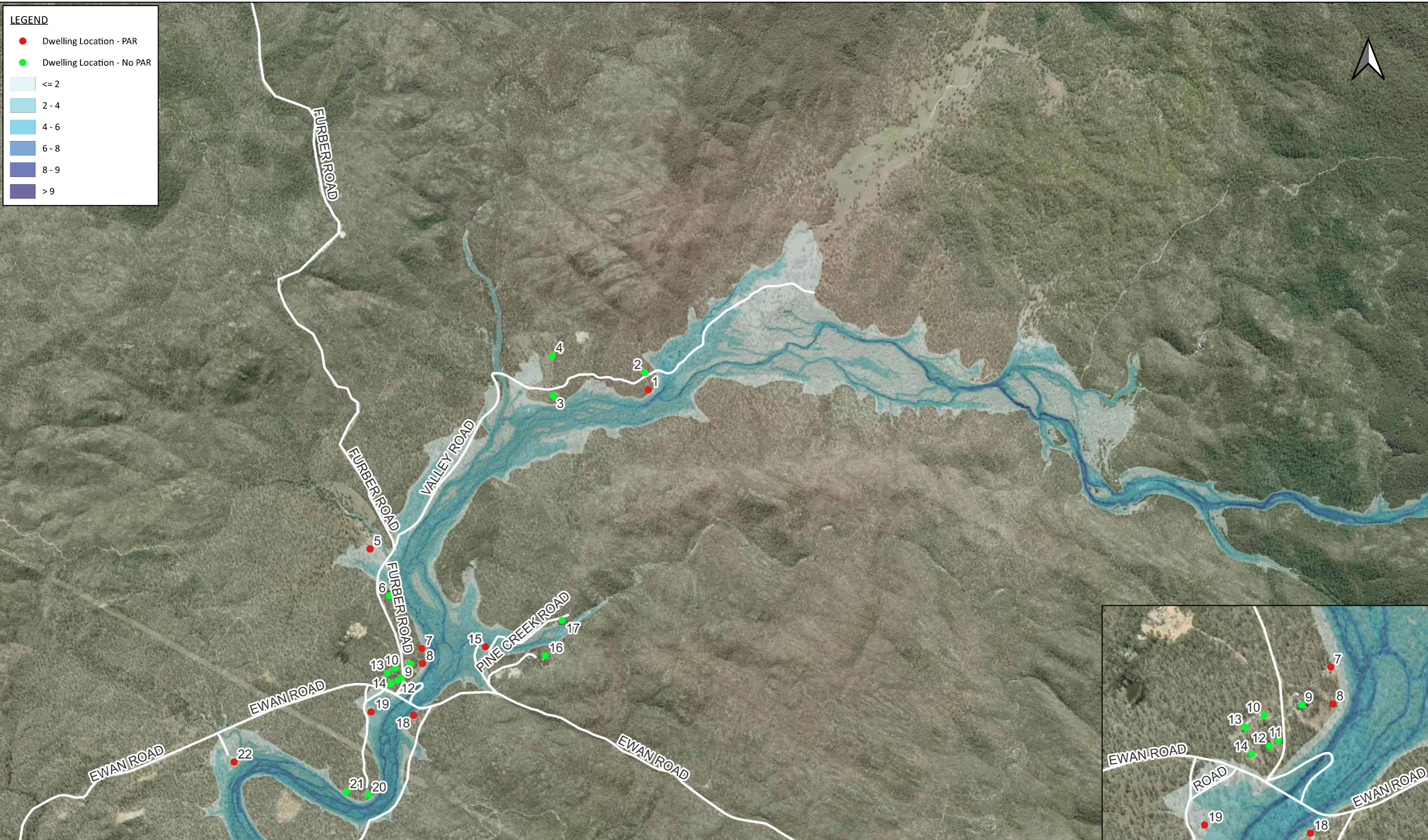
PROJECT TITLE: Paluma Dam FIA
PROJECT NO: 30035710
MAP TITLE: PMF No Fail Depth Map
MAP NO: 1
COORDINATE SYSTEM: GDA 94 / MGA ZONE 55

REVISION: 01
STATUS: FINAL
PAGE SIZE: A3
AUTHOR: L.Meteyard
SOURCES: QGlobe
DATE: 19/04/23

© SMEC Australia Pty Ltd 2022. All Rights Reserved
 Disclaimer: While all reasonable care has been taken to ensure the information contained on this map is up to date and accurate, this map contains data from a number of sources - no warranty is given that the information contained on this is free from error or omission. Any reliance placed on such information shall be at the sole risk of the user. Please verify the accuracy of all information prior to using it. This map is not a design document.

CLIENT:

CONSULTANT:



PROJECT TITLE: Paluma Dam FIA
PROJECT NO: 30035710
MAP TITLE: PMF No Fail Depth Map
MAP NO: 2
COORDINATE SYSTEM: GDA 94 / MGA ZONE 55

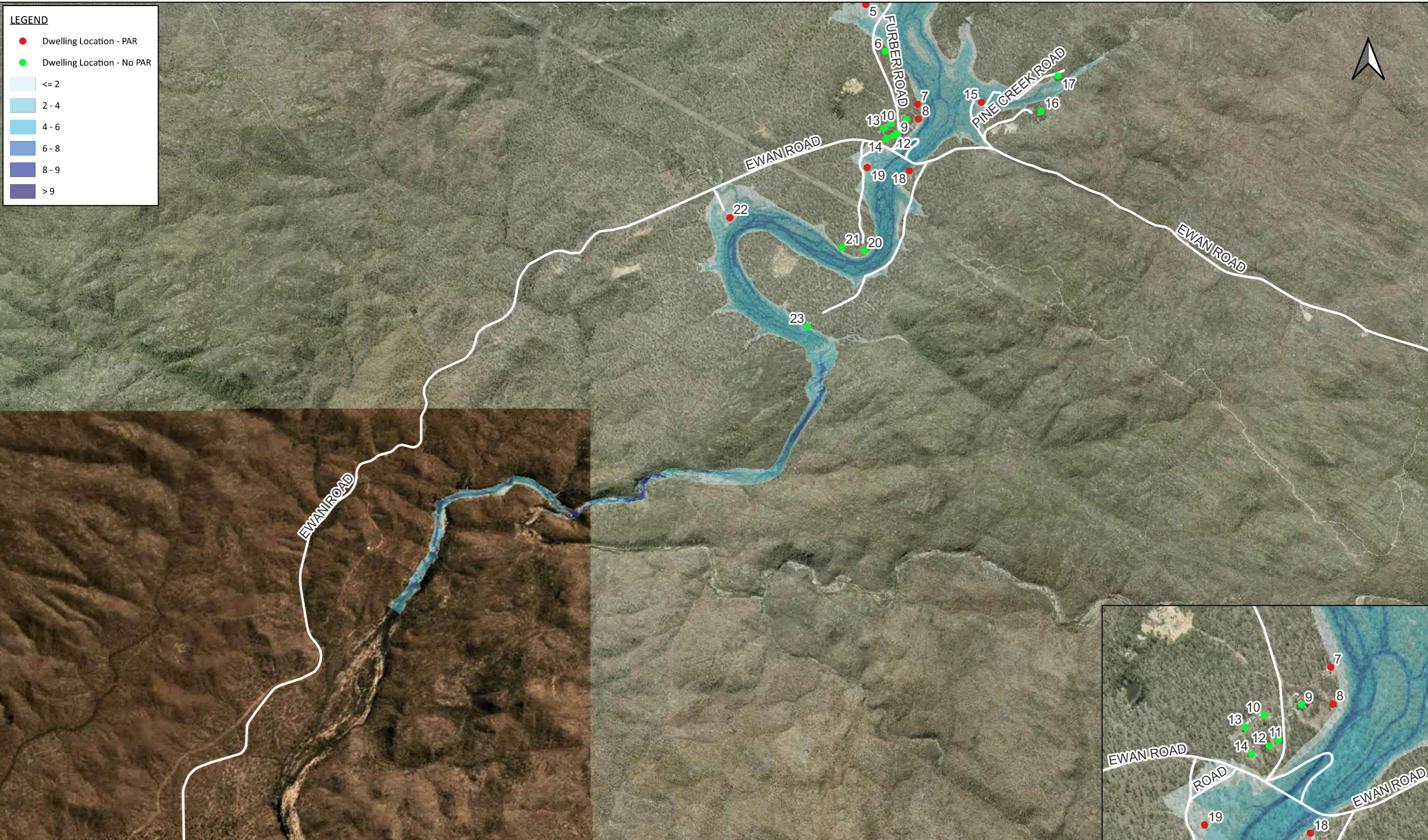
0 300 600 900 1,200 1,500 m

REVISION: 01
STATUS: FINAL
PAGE SIZE: A3
AUTHOR: L.Meteyard
SOURCES: QGlobe
DATE: 19/04/23

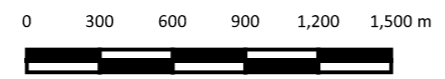
© SMEC Australia Pty Ltd 2022. All Rights Reserved
 Disclaimer: While all reasonable care has been taken to ensure the information contained on this map is up to date and accurate, this map contains data from a number of sources - no warranty is given that the information contained on this is free from error or omission. Any reliance placed on such information shall be at the sole risk of the user. Please verify the accuracy of all information prior to using it. This map is not a design document.

CLIENT:

CONSULTANT:



PROJECT TITLE: Paluma Dam FIA
PROJECT NO: 30035710
MAP TITLE: PMF No Fail Depth Map
MAP NO: 3
COORDINATE SYSTEM: GDA 94 / MGA ZONE 55



REVISION: 01
STATUS: FINAL
PAGE SIZE: A3
AUTHOR: L.Meteyard
SOURCES: QGlobe
DATE: 19/04/23

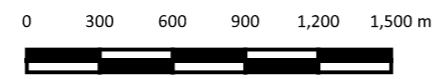
© SMEC Australia Pty Ltd 2022. All Rights Reserved
 Disclaimer: While all reasonable care has been taken to ensure the information contained on this map is up to date and accurate, this map contains data from a number of sources - no warranty is given that the information contained on this is free from error or omission. Any reliance placed on such information shall be at the sole risk of the user. Please verify the accuracy of all information prior to using it. This map is not a design document.

CLIENT:

CONSULTANT:




PROJECT TITLE: Paluma Dam FIA
PROJECT NO: 30035710
MAP TITLE: PMF Fail Depth Map
MAP NO: 1
COORDINATE SYSTEM: GDA 94 / MGA ZONE 55



REVISION: 01
STATUS: FINAL
PAGE SIZE: A3
AUTHOR: L.Meteyard
SOURCES: QGlobe
DATE: 19/04/23

© SMEC Australia Pty Ltd 2022. All Rights Reserved
 Disclaimer: While all reasonable care has been taken to ensure the information contained on this map is up to date and accurate, this map contains data from a number of sources - no warranty is given that the information contained on this is free from error or omission. Any reliance placed on such information shall be at the sole risk of the user. Please verify the accuracy of all information prior to using it. This map is not a design document.

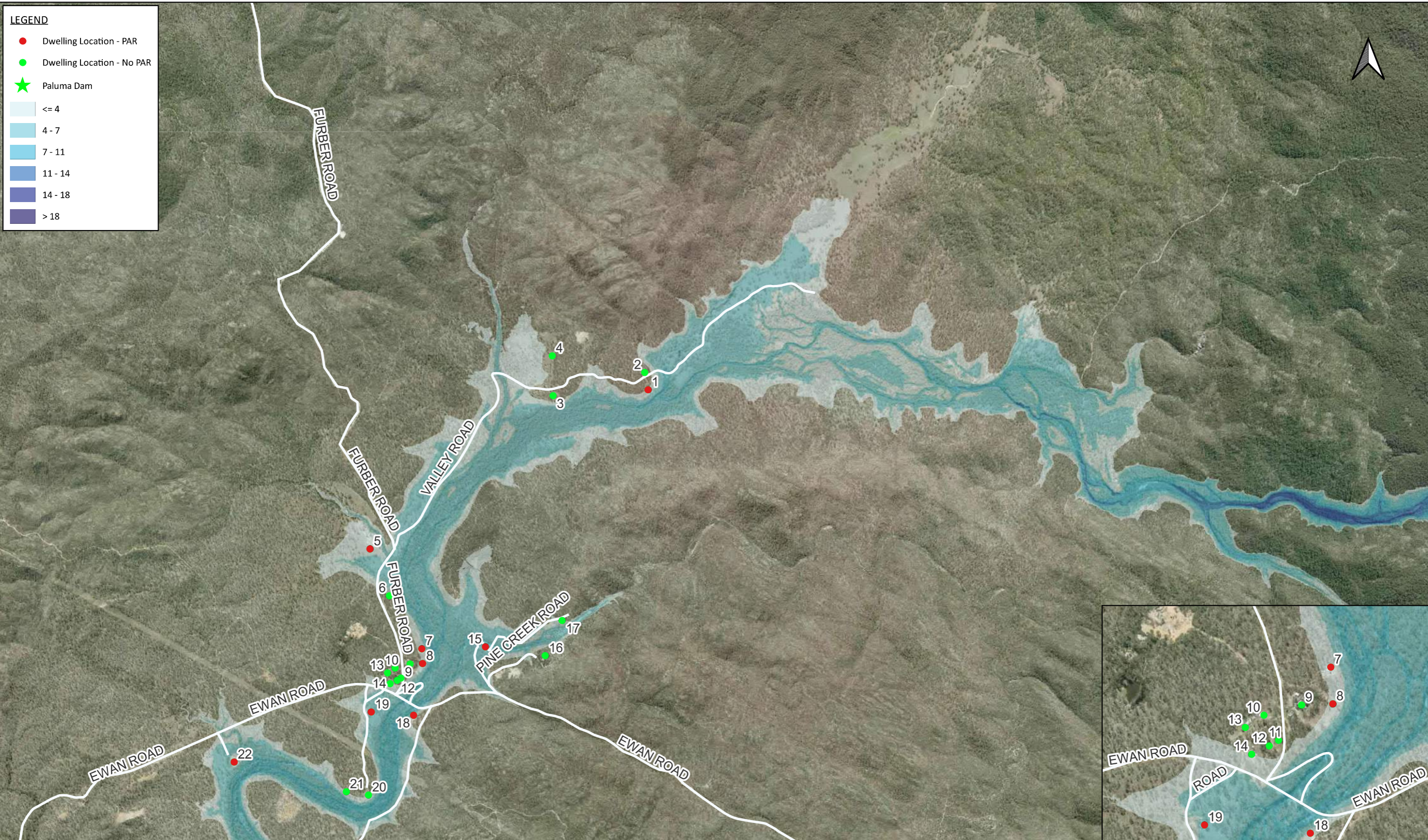
CLIENT:



CONSULTANT:



Member of the Surbana Jurong Group



LEGEND

- Dwelling Location - PAR
- Dwelling Location - No PAR
- ★ Paluma Dam
- ≤ 4
- 4 - 7
- 7 - 11
- 11 - 14
- 14 - 18
- > 18

PROJECT TITLE: Paluma Dam FIA	
PROJECT NO: 30035710	
MAP TITLE: PMF Fail Depth Map	
MAP NO: 2	
COORDINATE SYSTEM: GDA 94 / MGA ZONE 55	

REVISION: 01	
STATUS: FINAL	
PAGE SIZE: A3	
AUTHOR: L.Meteyard	
SOURCES: QGlobe	
DATE: 19/04/23	

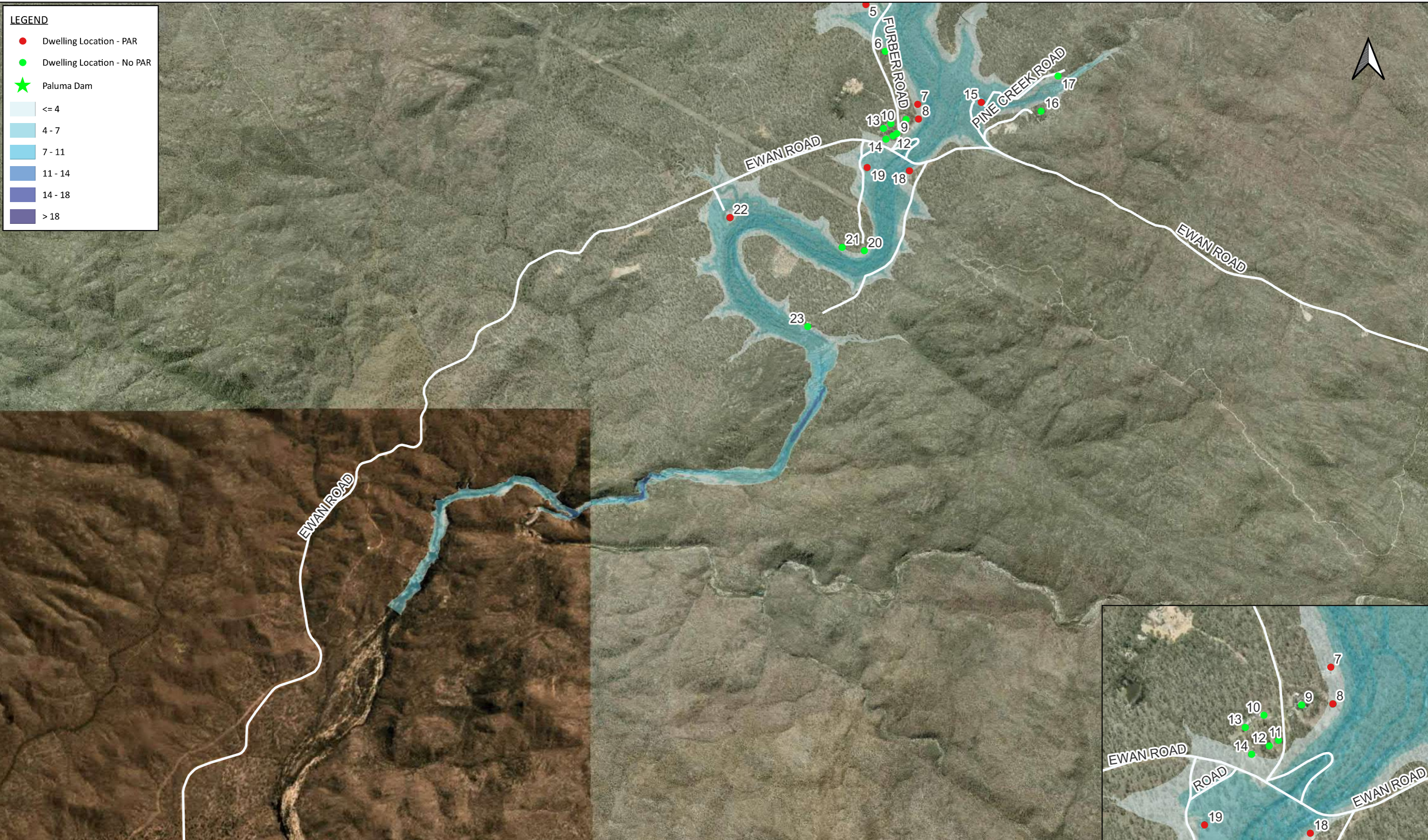
© SMEC Australia Pty Ltd 2022. All Rights Reserved

Disclaimer: While all reasonable care has been taken to ensure the information contained on this map is up to date and accurate, this map contains data from a number of sources - no warranty is given that the information contained on this is free from error or omission. Any reliance placed on such information shall be at the sole risk of the user. Please verify the accuracy of all information prior to using it. This map is not a design document.

CLIENT:

CONSULTANT:

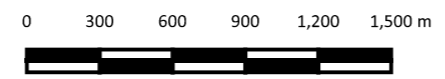
Member of the Surbana Jurong Group



LEGEND

- Dwelling Location - PAR
- Dwelling Location - No PAR
- ★ Paluma Dam
- <= 4
- 4 - 7
- 7 - 11
- 11 - 14
- 14 - 18
- > 18

PROJECT TITLE: Paluma Dam FIA
PROJECT NO: 30035710
MAP TITLE: PMF Fail Depth Map
MAP NO: 3
COORDINATE SYSTEM: GDA 94 / MGA ZONE 55



REVISION: 01
STATUS: FINAL
PAGE SIZE: A3
AUTHOR: L.Meteyard
SOURCES: QGlobe
DATE: 19/04/23

© SMEC Australia Pty Ltd 2022. All Rights Reserved
 Disclaimer: While all reasonable care has been taken to ensure the information contained on this map is up to date and accurate, this map contains data from a number of sources - no warranty is given that the information contained on this is free from error or omission. Any reliance placed on such information shall be at the sole risk of the user. Please verify the accuracy of all information prior to using it. This map is not a design document.

CLIENT:



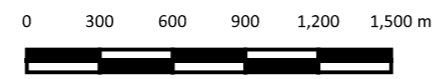
CONSULTANT:



Member of the Surbana Jurong Group




PROJECT TITLE: Paluma Dam FIA
PROJECT NO: 30035710
MAP TITLE: PMP-F No Fail Depth Map
MAP NO: 1
COORDINATE SYSTEM: GDA 94 / MGA ZONE 55



REVISION: 01
STATUS: FINAL
PAGE SIZE: A3
AUTHOR: L.Meteyard
SOURCES: QGlobe
DATE: 19/04/23

© SMEC Australia Pty Ltd 2022. All Rights Reserved
 Disclaimer: While all reasonable care has been taken to ensure the information contained on this map is up to date and accurate, this map contains data from a number of sources - no warranty is given that the information contained on this is free from error or omission. Any reliance placed on such information shall be at the sole risk of the user. Please verify the accuracy of all information prior to using it. This map is not a design document.

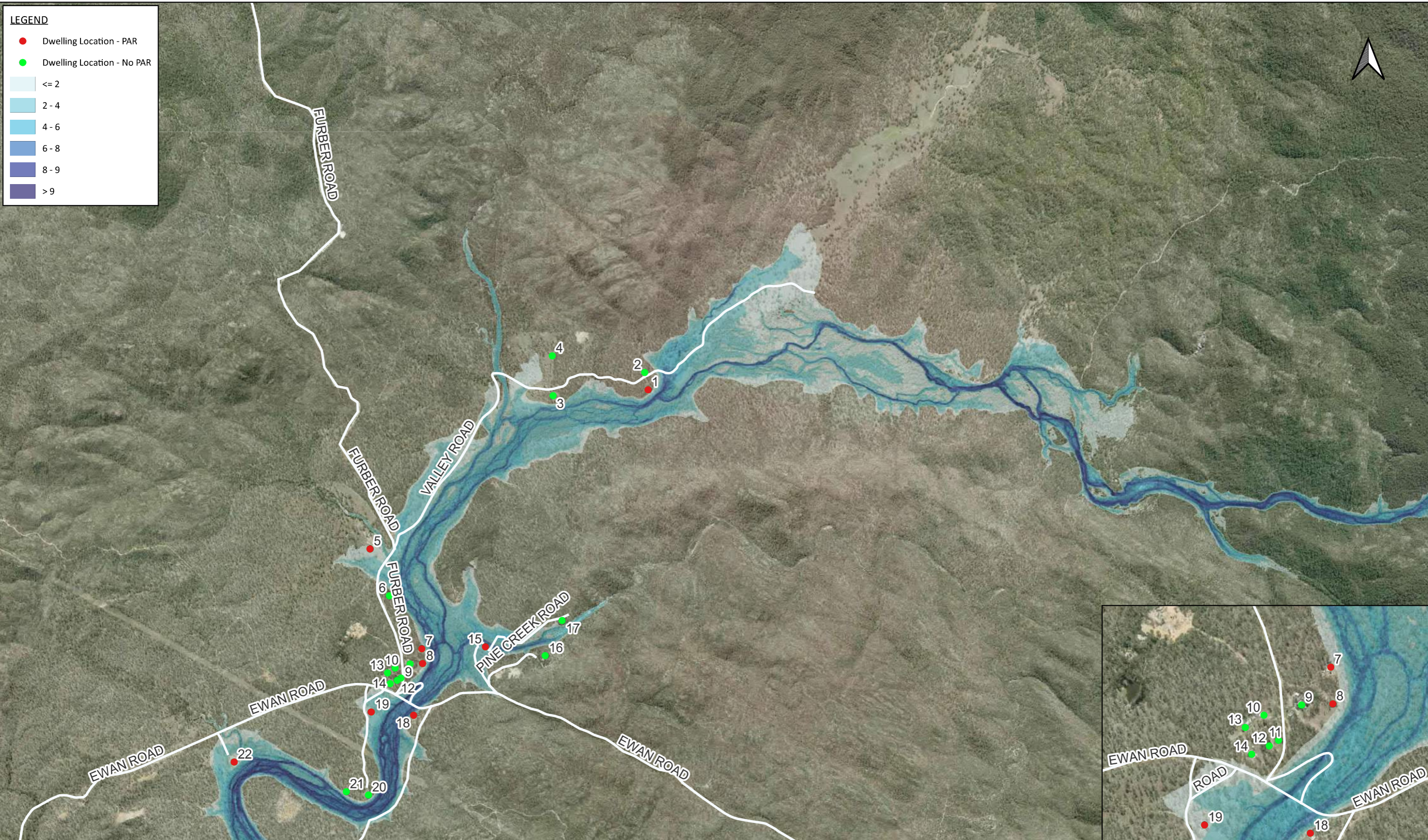
CLIENT:



CONSULTANT:



Member of the Surbana Jurong Group



LEGEND

- Dwelling Location - PAR
- Dwelling Location - No PAR
- <= 2
- 2 - 4
- 4 - 6
- 6 - 8
- 8 - 9
- > 9

PROJECT TITLE: Paluma Dam FIA
PROJECT NO: 30035710
MAP TITLE: PMP-F No Fail Depth Map
MAP NO: 2
COORDINATE SYSTEM: GDA 94 / MGA ZONE 55

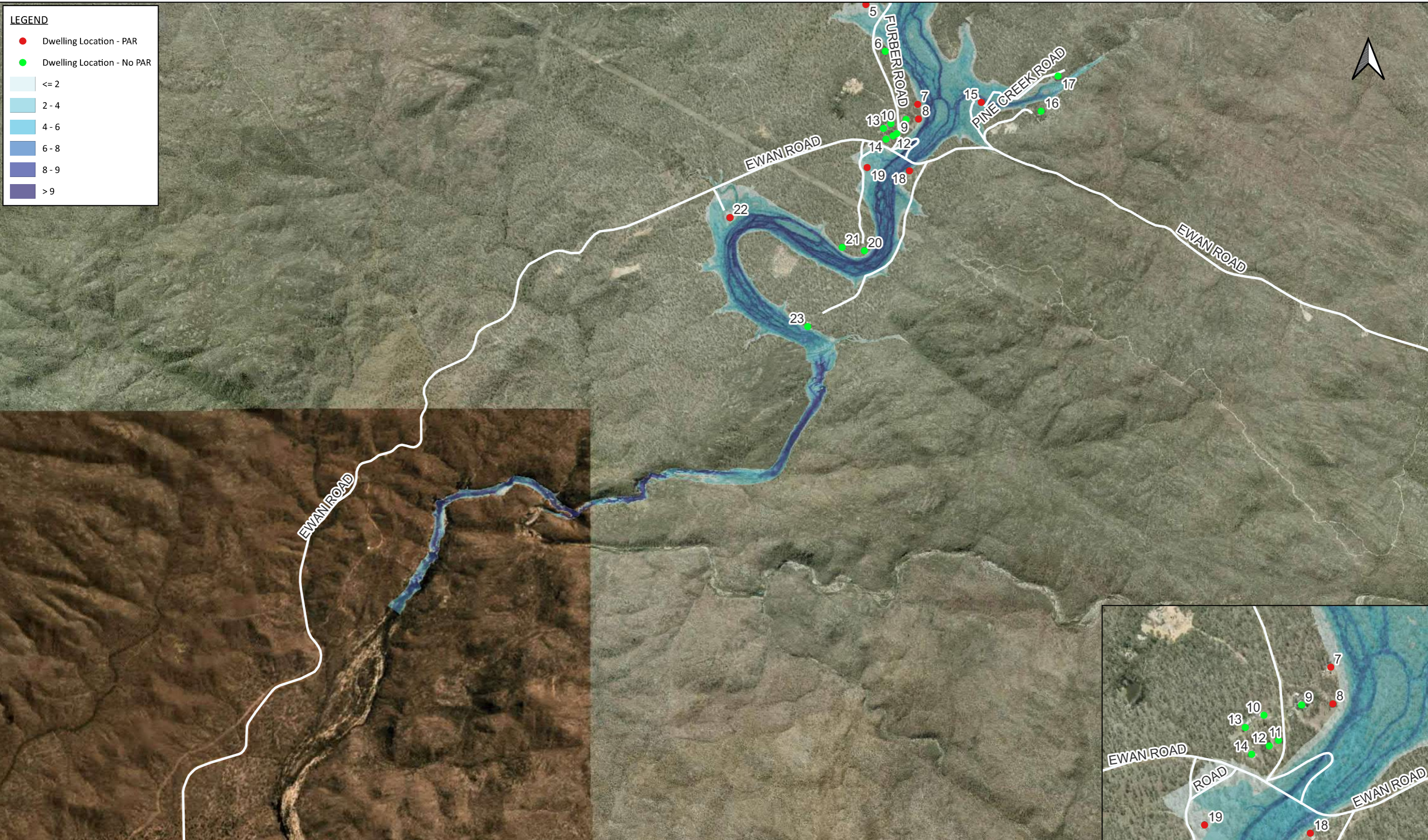
0 300 600 900 1,200 1,500 m

REVISION: 01
STATUS: FINAL
PAGE SIZE: A3
AUTHOR: L.Meteyard
SOURCES: QGlobe
DATE: 19/04/23

© SMEC Australia Pty Ltd 2022. All Rights Reserved
 Disclaimer: While all reasonable care has been taken to ensure the information contained on this map is up to date and accurate, this map contains data from a number of sources - no warranty is given that the information contained on this is free from error or omission. Any reliance placed on such information shall be at the sole risk of the user. Please verify the accuracy of all information prior to using it. This map is not a design document.

CLIENT:

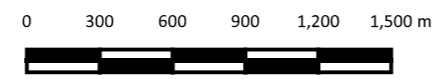
CONSULTANT:



LEGEND

- Dwelling Location - PAR
- Dwelling Location - No PAR
- <= 2
- 2 - 4
- 4 - 6
- 6 - 8
- 8 - 9
- > 9


PROJECT TITLE: Paluma Dam FIA
PROJECT NO: 30035710
MAP TITLE: PMP-F No Fail Depth Map
MAP NO: 3
COORDINATE SYSTEM: GDA 94 / MGA ZONE 55



REVISION: 01
STATUS: FINAL
PAGE SIZE: A3
AUTHOR: L.Meteyard
SOURCES: QGlobe
DATE: 19/04/23

© SMEC Australia Pty Ltd 2022. All Rights Reserved
 Disclaimer: While all reasonable care has been taken to ensure the information contained on this map is up to date and accurate, this map contains data from a number of sources - no warranty is given that the information contained on this is free from error or omission. Any reliance placed on such information shall be at the sole risk of the user. Please verify the accuracy of all information prior to using it. This map is not a design document.

CLIENT:



CONSULTANT:



Member of the Surbana Jurong Group



LEGEND

- Dwelling Location - PAR
- Dwelling Location - No PAR
- ★ Paluma Dam
- <= 3
- 3 - 7
- 7 - 10
- 10 - 14
- 14 - 17
- > 17

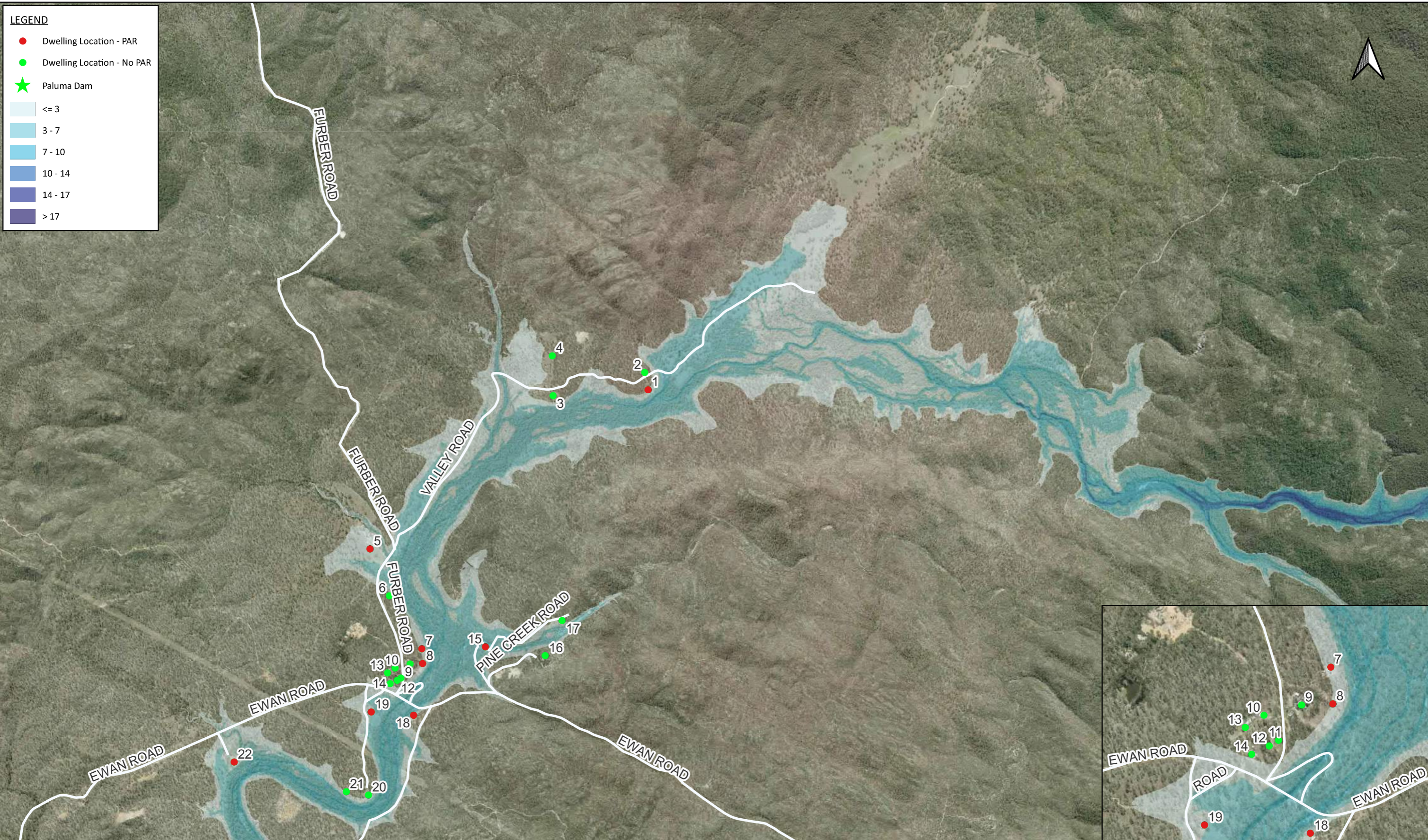
PROJECT TITLE: Paluma Dam FIA
PROJECT NO: 30035710
MAP TITLE: PMP-F Fail Depth Map
MAP NO: 1
COORDINATE SYSTEM: GDA 94 / MGA ZONE 55

REVISION: 01
STATUS: FINAL
PAGE SIZE: A3
AUTHOR: L.Meteyard
SOURCES: QGlobe
DATE: 19/04/23

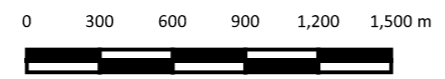
© SMEC Australia Pty Ltd 2022. All Rights Reserved
 Disclaimer: While all reasonable care has been taken to ensure the information contained on this map is up to date and accurate, this map contains data from a number of sources - no warranty is given that the information contained on this is free from error or omission. Any reliance placed on such information shall be at the sole risk of the user. Please verify the accuracy of all information prior to using it. This map is not a design document.

CLIENT:

CONSULTANT:




PROJECT TITLE: Paluma Dam FIA
PROJECT NO: 30035710
MAP TITLE: PMP-F Fail Depth Map
MAP NO: 2
COORDINATE SYSTEM: GDA 94 / MGA ZONE 55



REVISION: 01
STATUS: FINAL
PAGE SIZE: A3
AUTHOR: L.Meteyard
SOURCES: QGlobe
DATE: 19/04/23

© SMEC Australia Pty Ltd 2022. All Rights Reserved
 Disclaimer: While all reasonable care has been taken to ensure the information contained on this map is up to date and accurate, this map contains data from a number of sources - no warranty is given that the information contained on this is free from error or omission. Any reliance placed on such information shall be at the sole risk of the user. Please verify the accuracy of all information prior to using it. This map is not a design document.

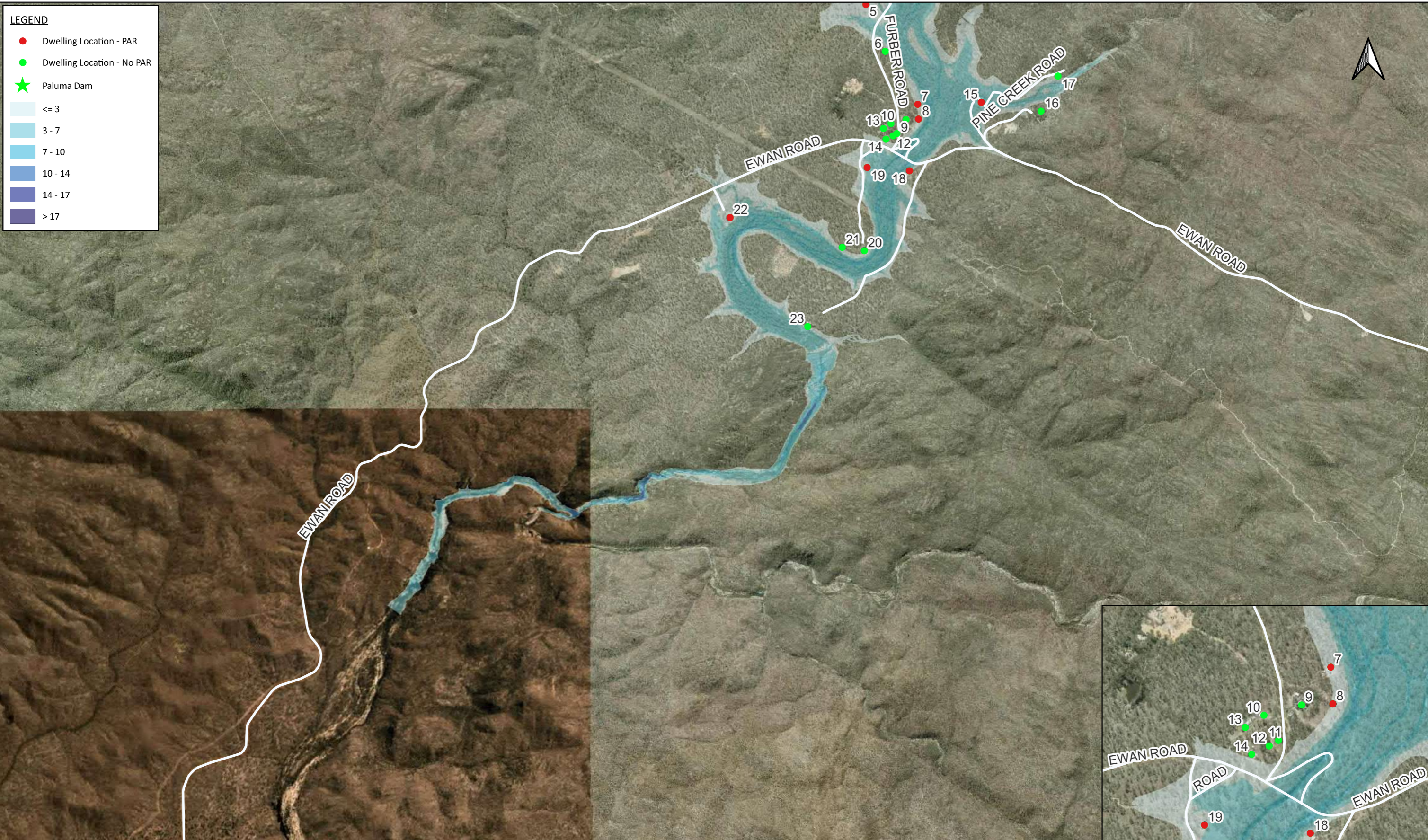
CLIENT:



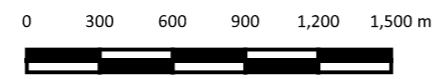
CONSULTANT:



Member of the Surbana Jurong Group




PROJECT TITLE: Paluma Dam FIA
PROJECT NO: 30035710
MAP TITLE: PMP-F Fail Depth Map
MAP NO: 3
COORDINATE SYSTEM: GDA 94 / MGA ZONE 55



REVISION: 01
STATUS: FINAL
PAGE SIZE: A3
AUTHOR: L.Meteyard
SOURCES: QGlobe
DATE: 19/04/23

© SMEC Australia Pty Ltd 2022. All Rights Reserved
 Disclaimer: While all reasonable care has been taken to ensure the information contained on this map is up to date and accurate, this map contains data from a number of sources - no warranty is given that the information contained on this is free from error or omission. Any reliance placed on such information shall be at the sole risk of the user. Please verify the accuracy of all information prior to using it. This map is not a design document.

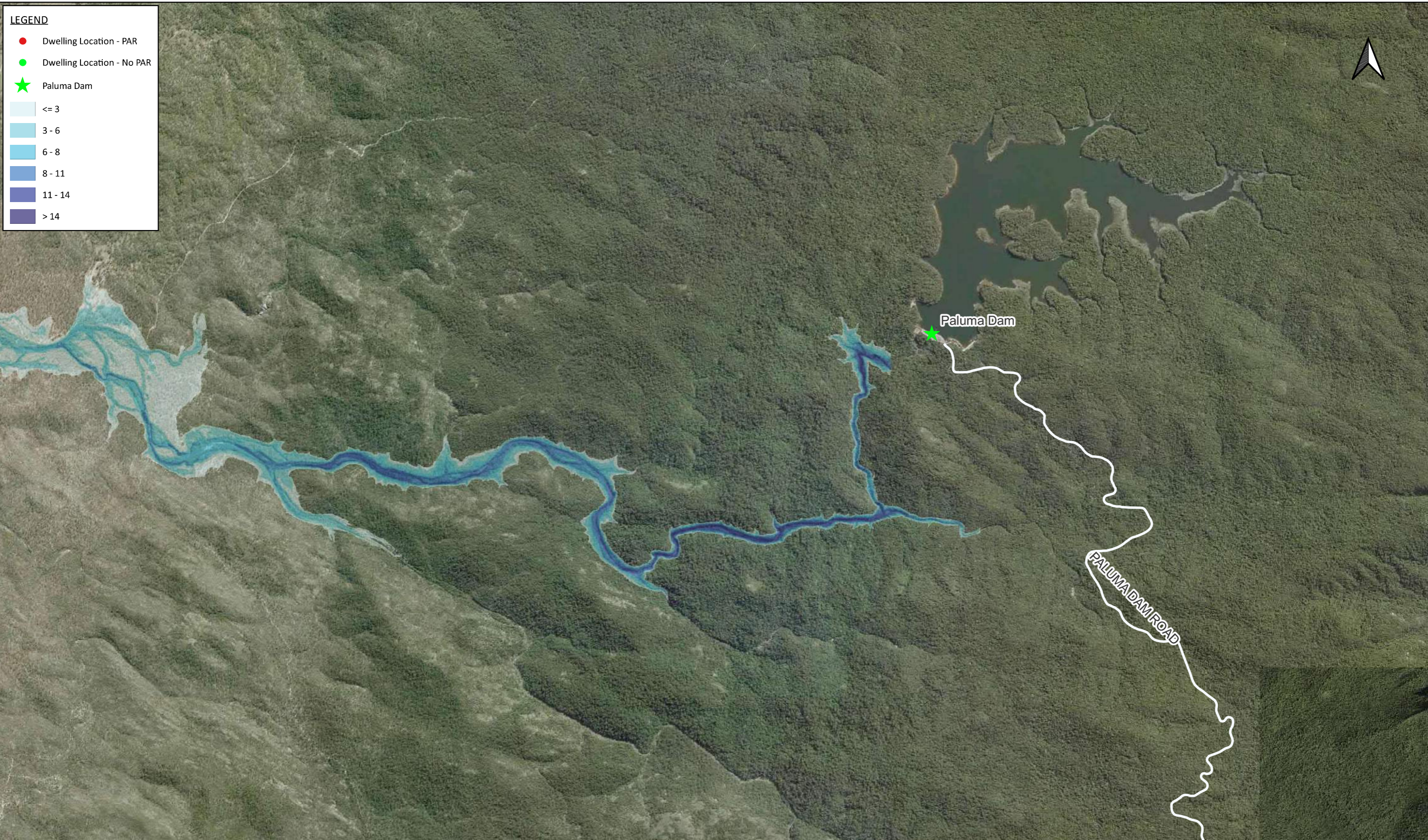
CLIENT:



CONSULTANT:



Member of the Surbana Jurong Group



LEGEND

- Dwelling Location - PAR
- Dwelling Location - No PAR
- ★ Paluma Dam
- <= 3
- 3 - 6
- 6 - 8
- 8 - 11
- 11 - 14
- > 14

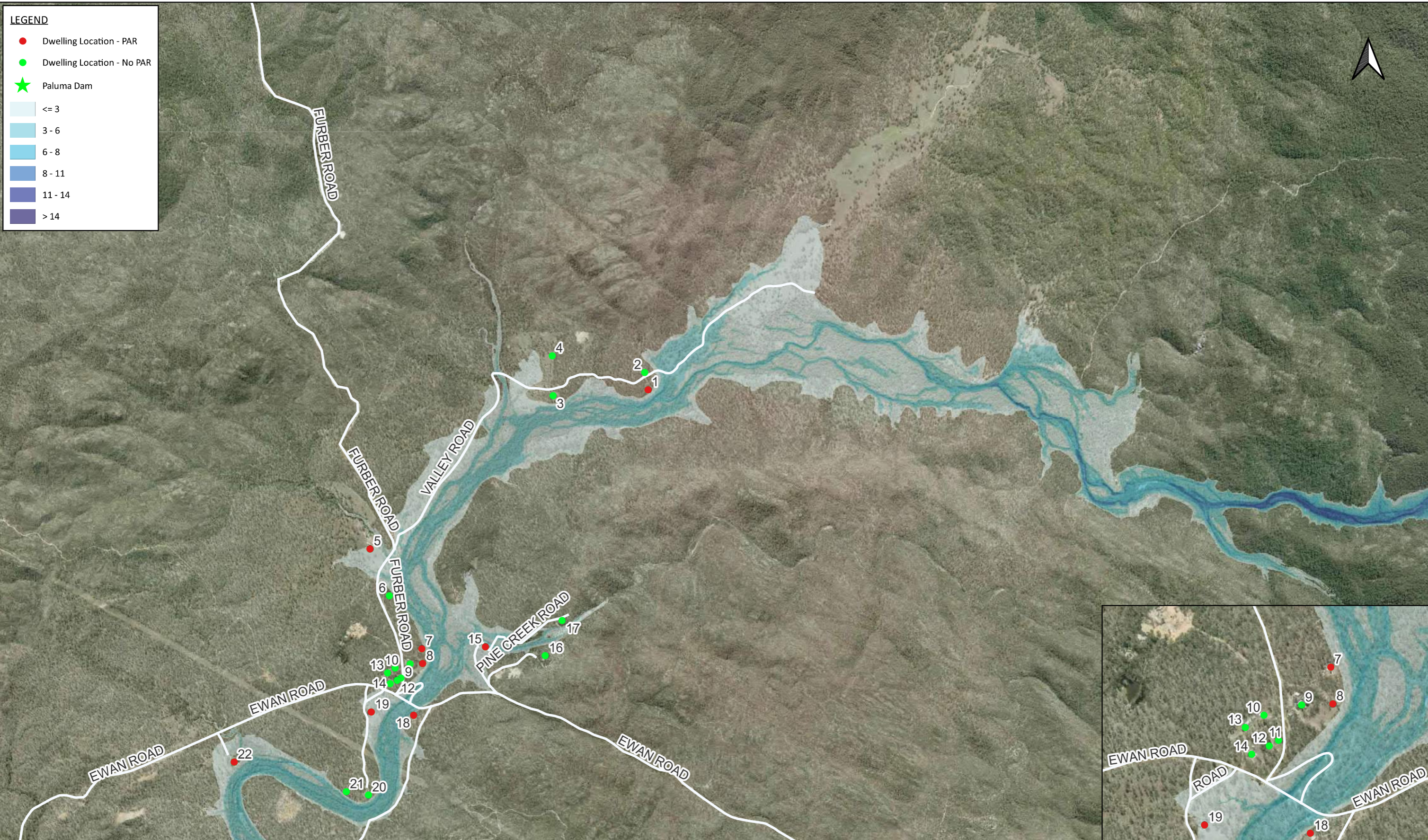
PROJECT TITLE: Paluma Dam FIA
PROJECT NO: 30035710
MAP TITLE: SDF Depth Map
MAP NO: 1
COORDINATE SYSTEM: GDA 94 / MGA ZONE 55

REVISION: 01
STATUS: FINAL
PAGE SIZE: A3
AUTHOR: L.Meteyard
SOURCES: QGlobe
DATE: 19/04/23

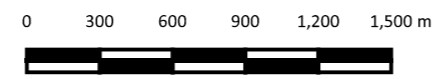
© SMEC Australia Pty Ltd 2022. All Rights Reserved
 Disclaimer: While all reasonable care has been taken to ensure the information contained on this map is up to date and accurate, this map contains data from a number of sources - no warranty is given that the information contained on this is free from error or omission. Any reliance placed on such information shall be at the sole risk of the user. Please verify the accuracy of all information prior to using it. This map is not a design document.

CLIENT:

CONSULTANT:



PROJECT TITLE: Paluma Dam FIA
PROJECT NO: 30035710
MAP TITLE: SDF Depth Map
MAP NO: 2
COORDINATE SYSTEM: GDA 94 / MGA ZONE 55



REVISION: 01
STATUS: FINAL
PAGE SIZE: A3
AUTHOR: L.Meteyard
SOURCES: QGlobe
DATE: 19/04/23

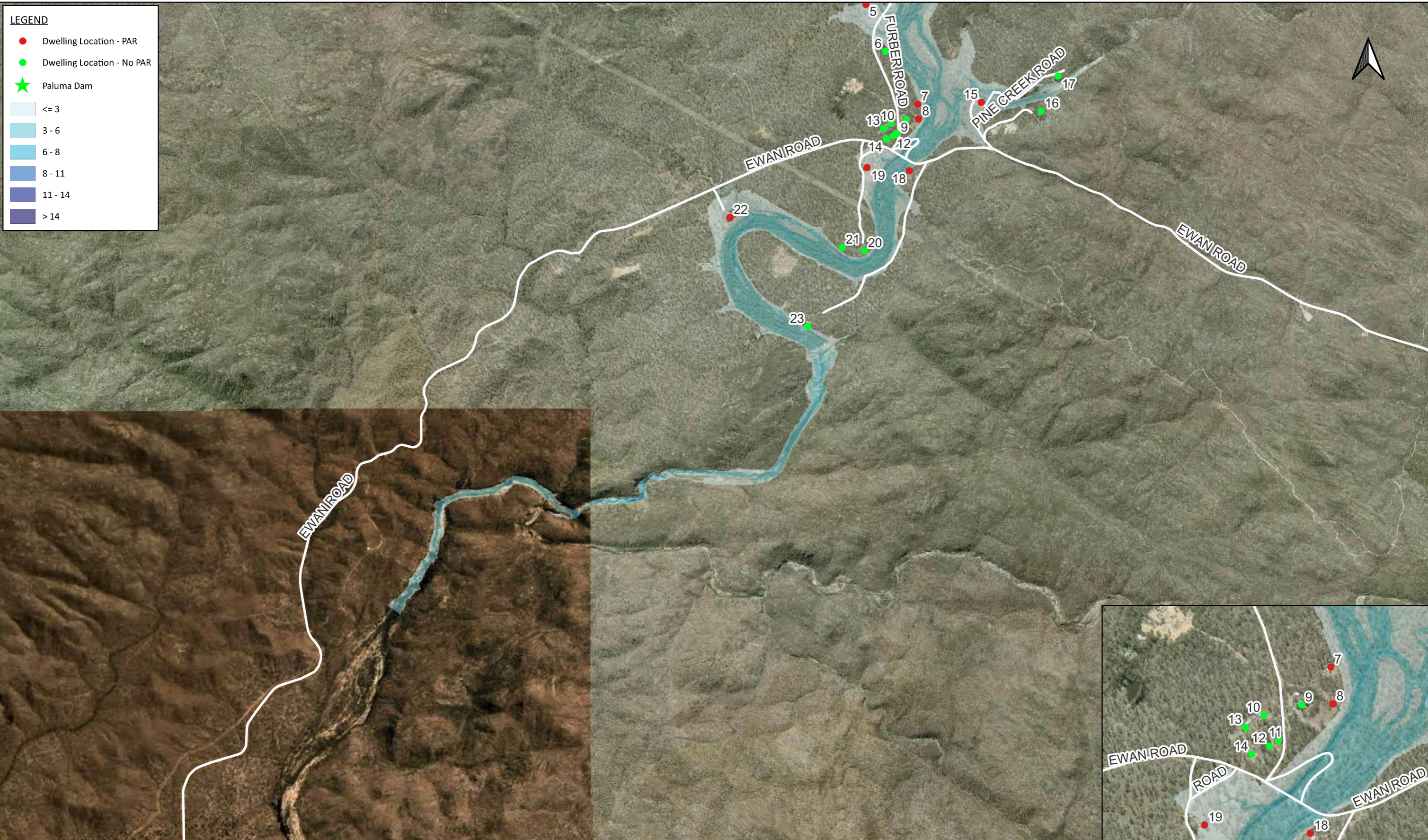
© SMEC Australia Pty Ltd 2022. All Rights Reserved
 Disclaimer: While all reasonable care has been taken to ensure the information contained on this map is up to date and accurate, this map contains data from a number of sources - no warranty is given that the information contained on this is free from error or omission. Any reliance placed on such information shall be at the sole risk of the user. Please verify the accuracy of all information prior to using it. This map is not a design document.

CLIENT:



CONSULTANT:

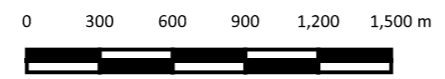




LEGEND

- Dwelling Location - PAR
- Dwelling Location - No PAR
- ★ Paluma Dam
- <= 3
- 3 - 6
- 6 - 8
- 8 - 11
- 11 - 14
- > 14

PROJECT TITLE: Paluma Dam FIA
PROJECT NO: 30035710
MAP TITLE: SDF Depth Map
MAP NO: 3
COORDINATE SYSTEM: GDA 94 / MGA ZONE 55




REVISION: 01
STATUS: FINAL
PAGE SIZE: A3
AUTHOR: L.Meteyard
SOURCES: QGlobe
DATE: 19/04/23


© SMEC Australia Pty Ltd 2022. All Rights Reserved

Disclaimer: While all reasonable care has been taken to ensure the information contained on this map is up to date and accurate, this map contains data from a number of sources - no warranty is given that the information contained on this is free from error or omission. Any reliance placed on such information shall be at the sole risk of the user. Please verify the accuracy of all information prior to using it. This map is not a design document.

CLIENT:



CONSULTANT:



Member of the Surbana Jurong Group